



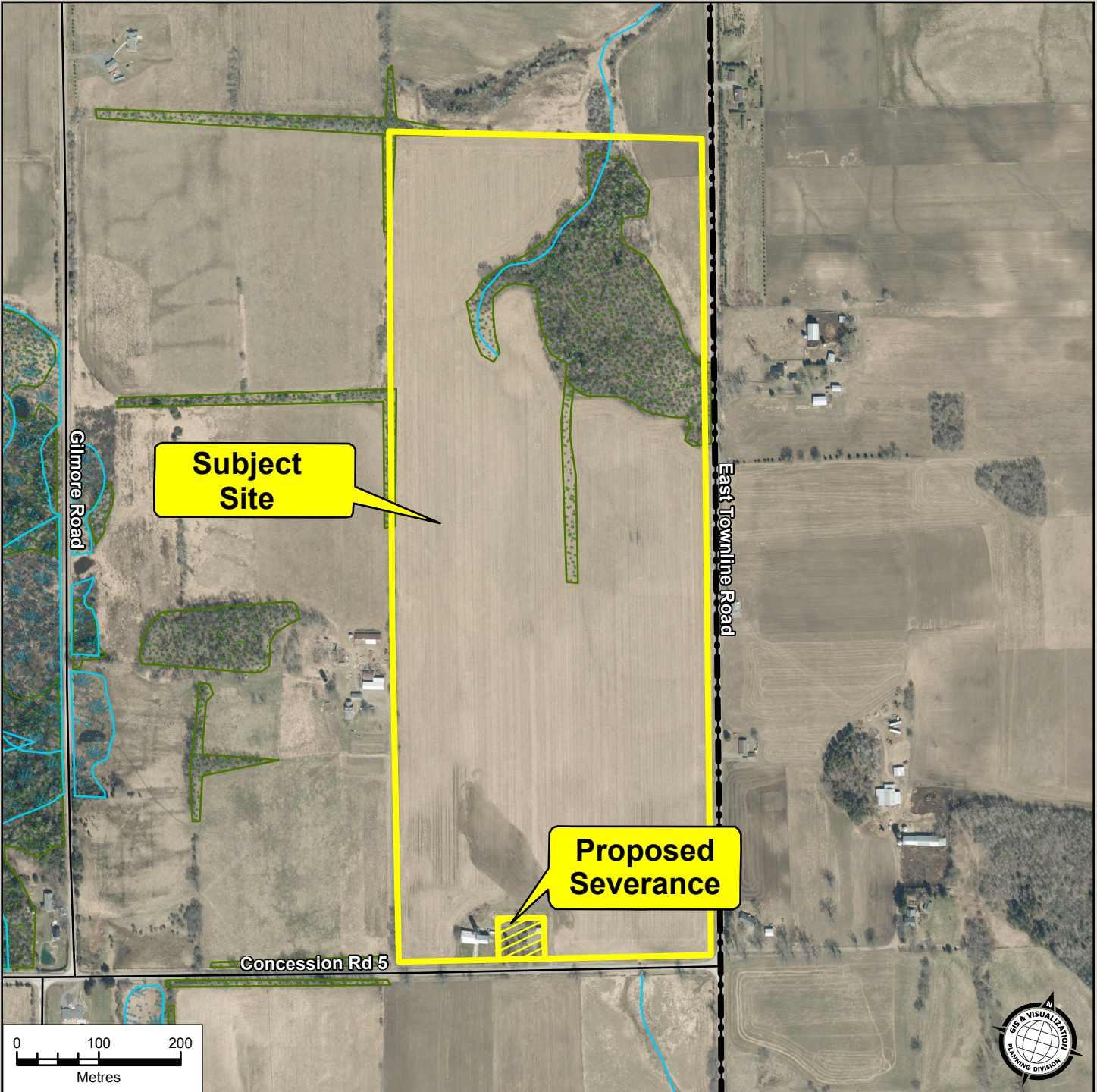
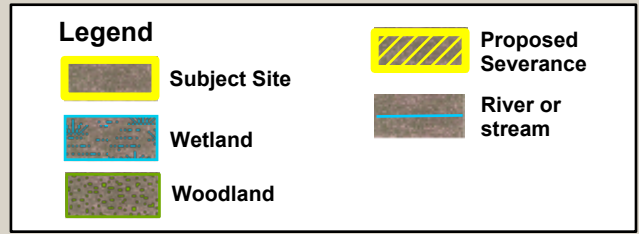
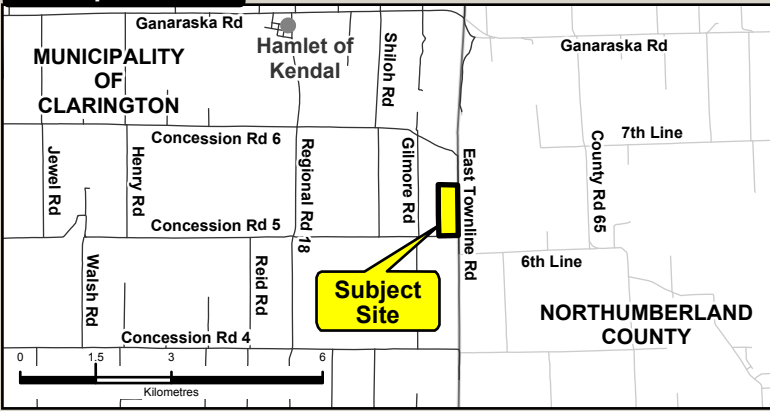
Public Meeting ROPA 2023-002

Sara Hajsaleh, Planning Analyst

Planning Division

Planning & Economic Development
Department

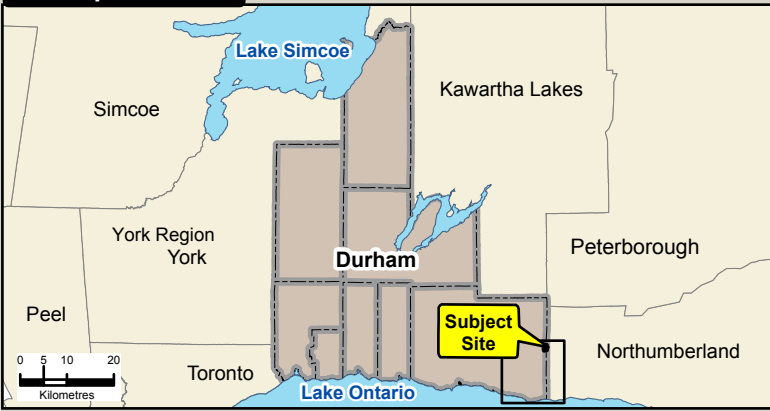
Municipal Context



Data Sources:
 PARCEL DATA: Ownership © Teranet Inc. and its suppliers. Assessment © 2022 MPAC and its suppliers.
 ORTHOPHOTO and WATERCOURSE: © 2021 First Base Solutions. All rights reserved. May not be reproduced without permission.
 This is not a plan of survey.




This map has been produced from a variety of sources.
 The Region of Durham does not make any representations concerning the accuracy, likely results, or reliability of the use of the materials.
 The Region hereby disclaims all representations and warranties.

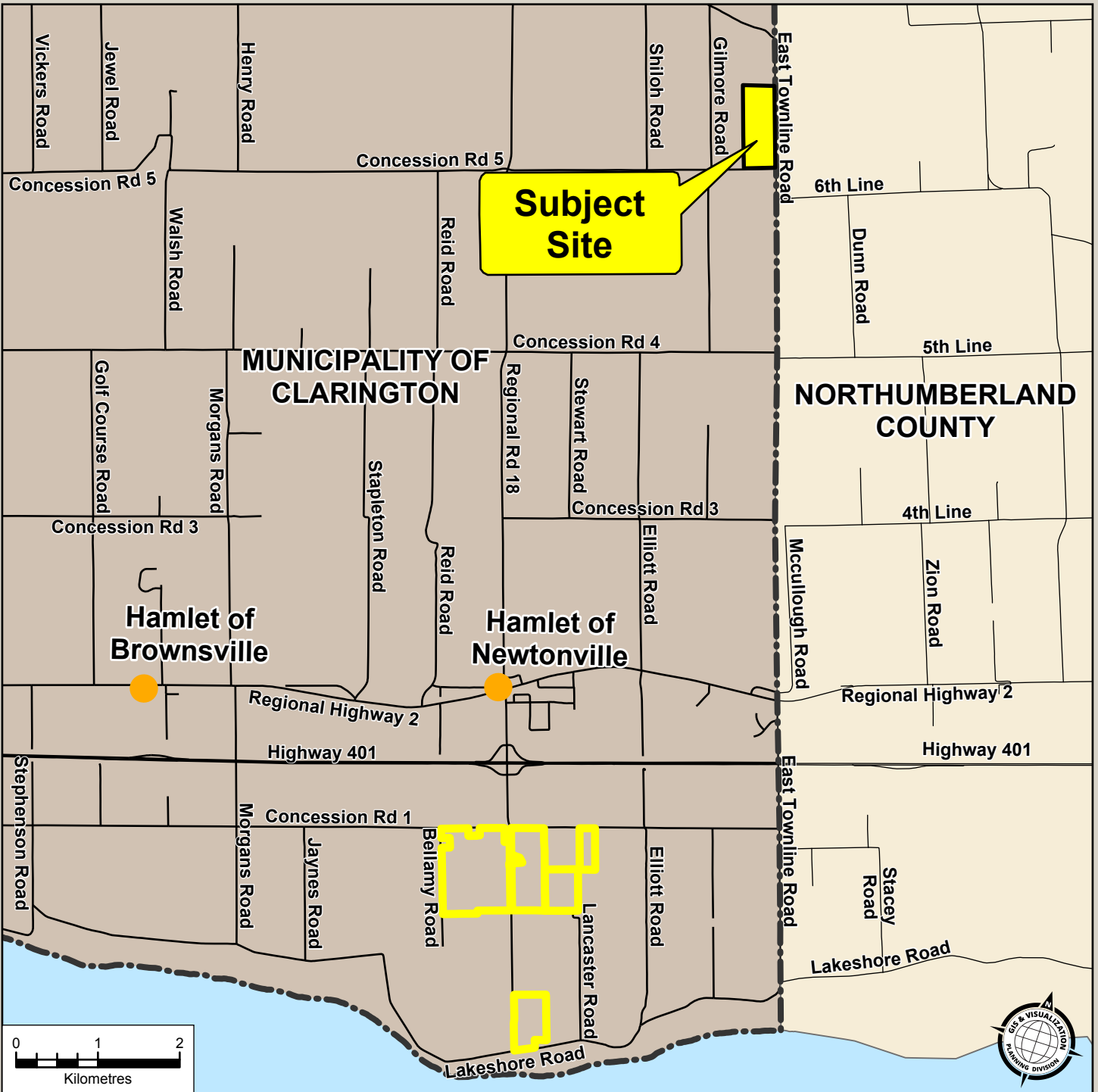
Municipal Context



Attachment #2
Commissioner's Report: 2023-P-9
File: ROPA 2023-002
Municipality: Municipality of Clarington

Legend

-  Subject Site
-  Other Lands Owned by Thornlea Holsteins Ltd.
-  Municipal Boundary



Data Sources:
 PARCEL DATA: Ownership © Teranet Inc. and its suppliers. Assessment © 2022 MPAC and its suppliers.
 ORTHOPHOTO and WATERCOURSE: © 2021 First Base Solutions. All rights reserved. May not be reproduced without permission.
 This is not a plan of survey.

This map has been produced from a variety of sources.
 The Region of Durham does not make any representations concerning the accuracy, likely results, or reliability of the use of the materials.
 The Region hereby disclaims all representations and warranties.



Questions?

Sara Hajsaleh, Planning Analyst
Planning Division
Planning & Economic Development
Department