

April 10, 2024

# GTHA Emissions Inventory

## *Focus on Durham*

Durham Regional Council



BUILDINGS

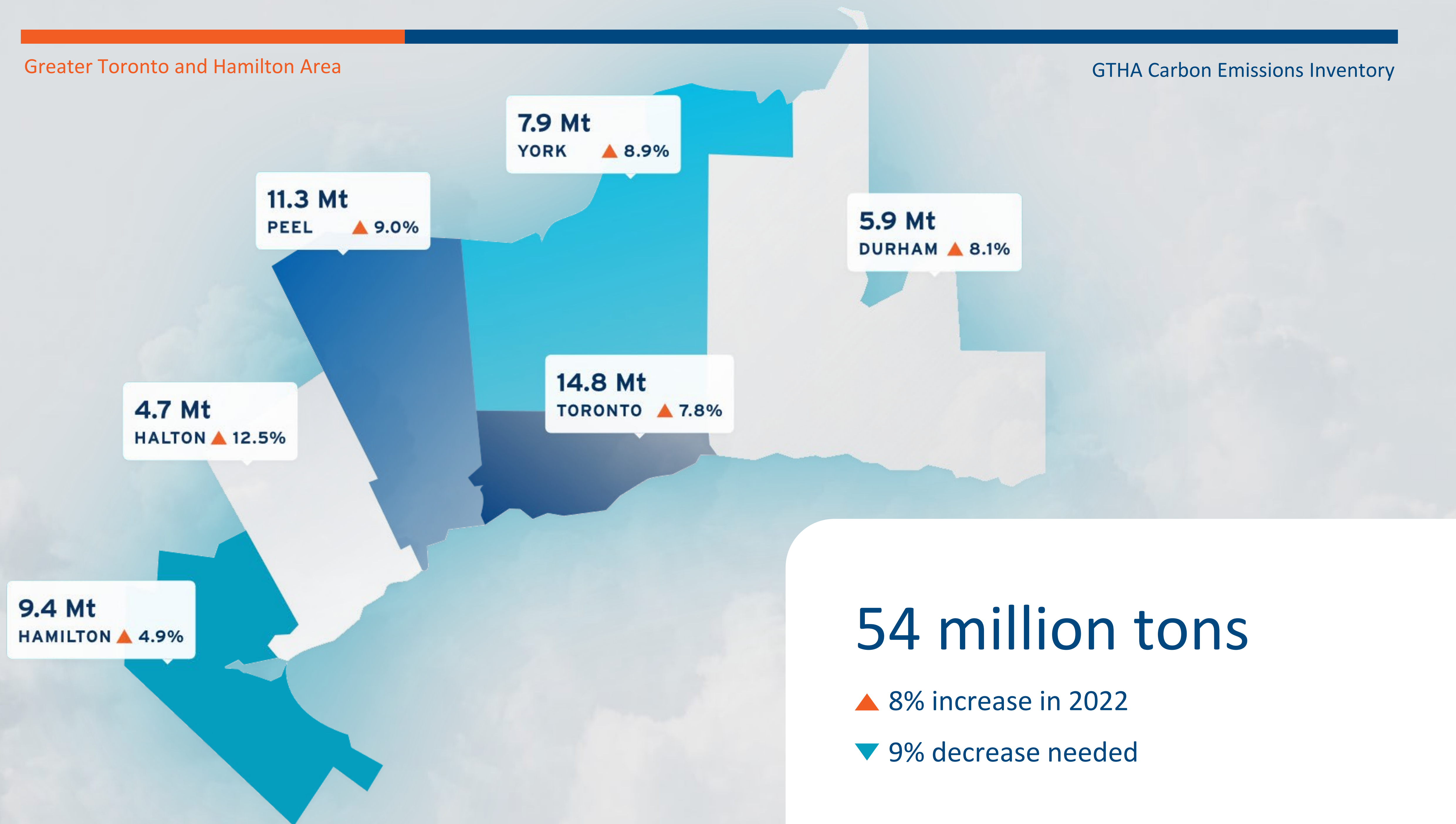
TRANSPORTATION

INDUSTRY

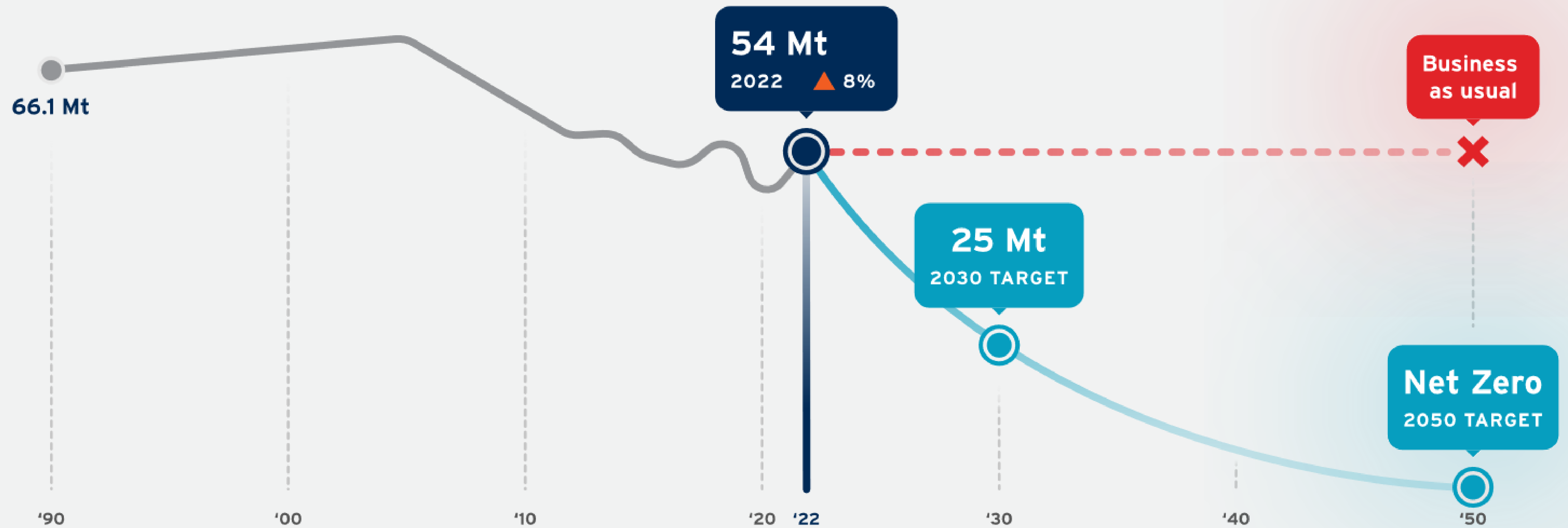
WASTE

AGRICULTURE

- Geographic scope – six regions
- Timing – one year lag
- Industrial and agriculture included
- Transportation – fuel sales
- Waste – methane commitment



# Where we need to be



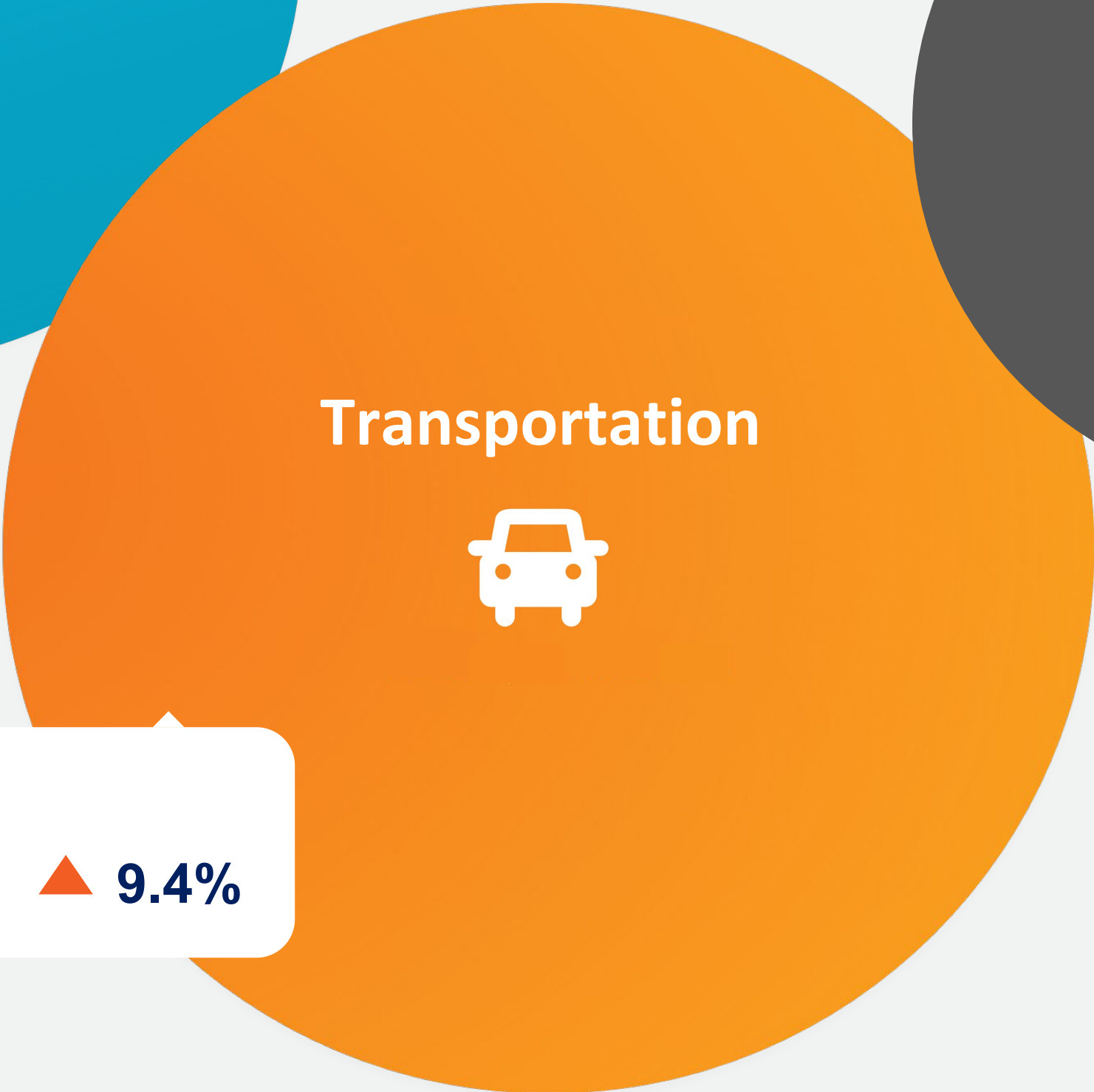
**31%**  
**1.80 Mt** ▲ **10.5%**



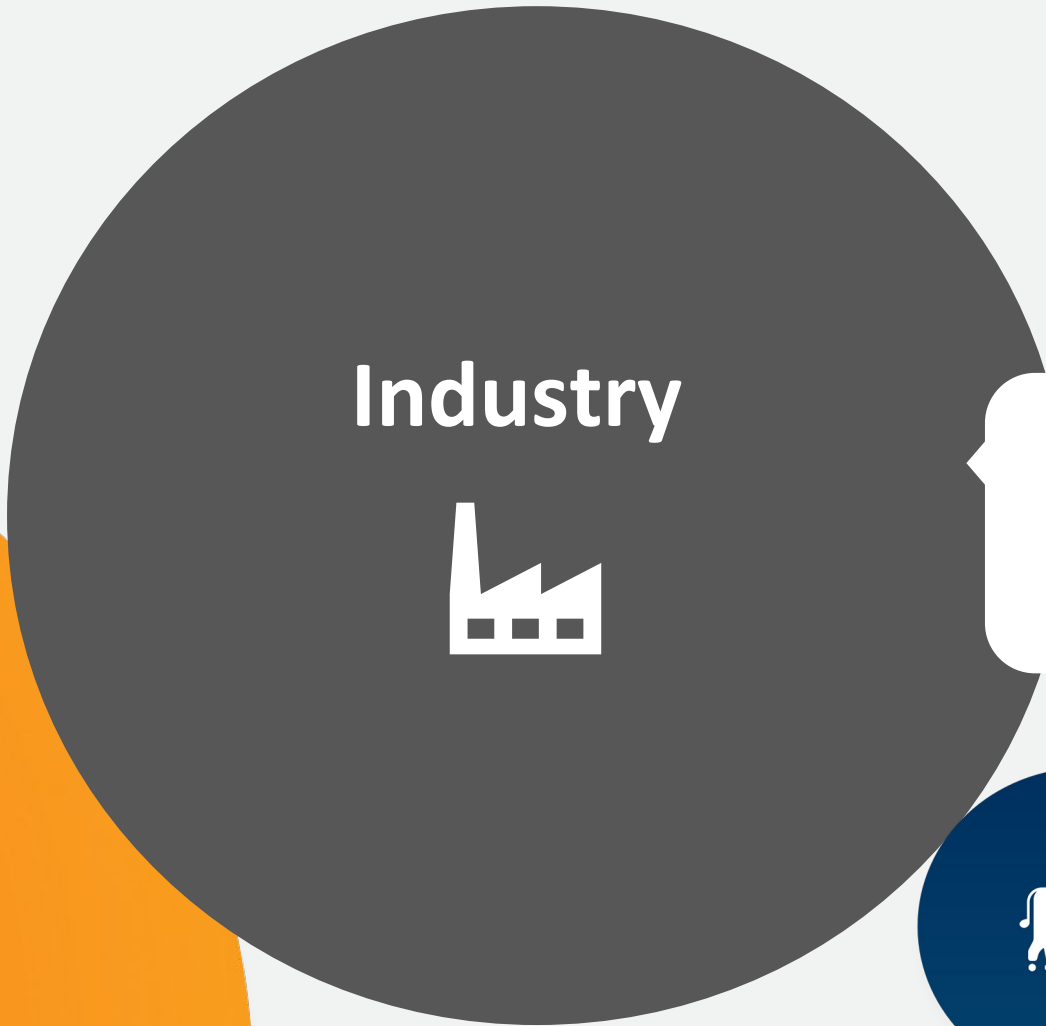
Buildings



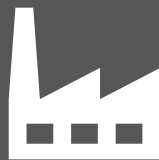
**37%**  
**2.20 Mt** ▲ **9.4%**



Transportation



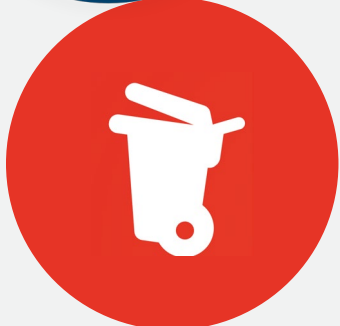
Industry



**25%**  
**1.50 Mt** ▲ **4.9%**

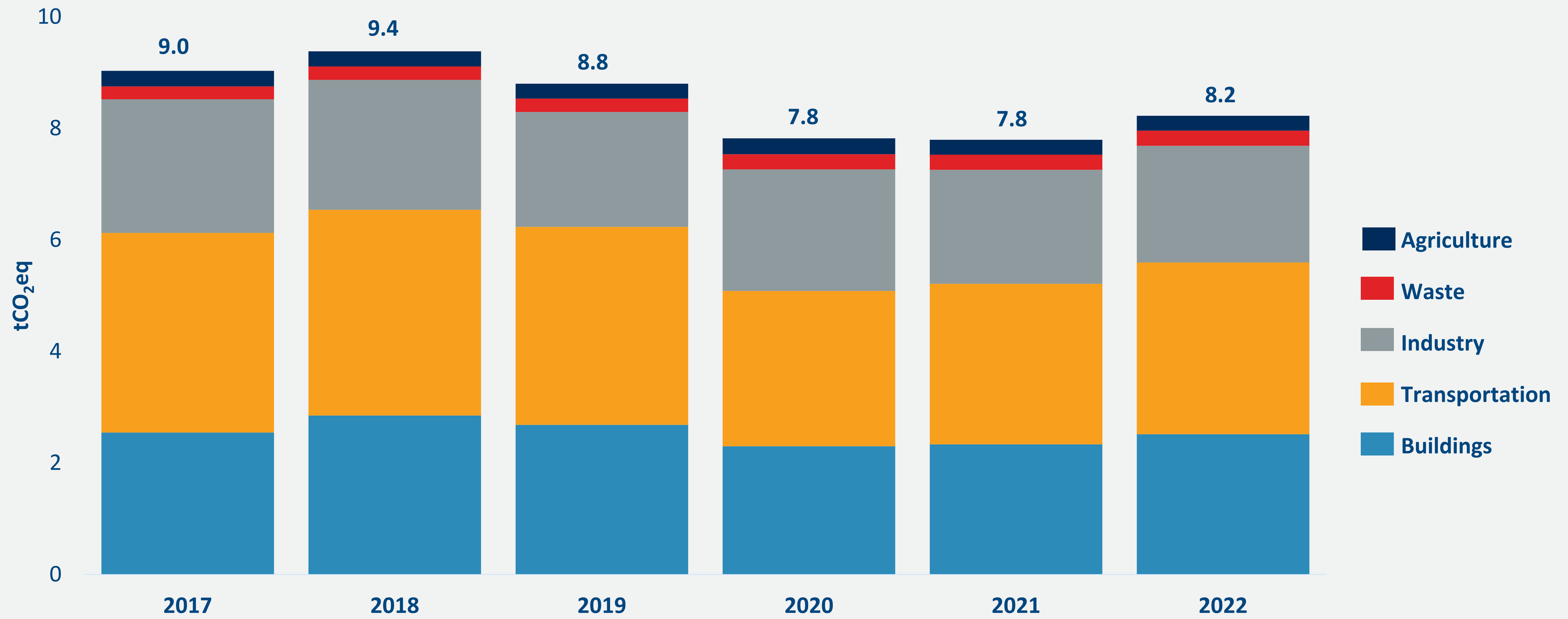


**AGRICULTURE: 3%**  
**0.2 Mt** ▲ **2.4%**



**WASTE: 3%**  
**0.2 Mt** ▲ **2.4%**

# Durham Region: Per Capita Emissions, 2017-2022



Total 2022 carbon emissions 2.2 MtCO<sub>2</sub>eq

% Change in emissions (per capita) +6.9%

% of Durham emissions 37%

# Transportation →

# Good trends in transportation →

Total 2022 carbon emissions 1.8 MtCO<sub>2</sub>eq

% Change in emissions (per capita) +7.9%

% of Durham emissions 31%

Buildings →

# Electricity →

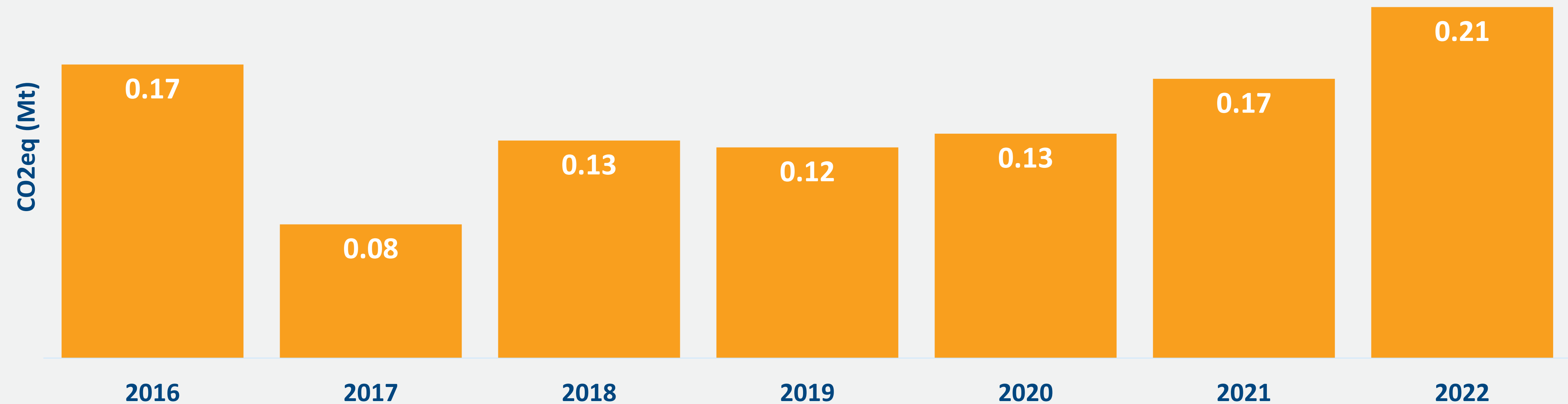
Photo credit: Oshawa.ca





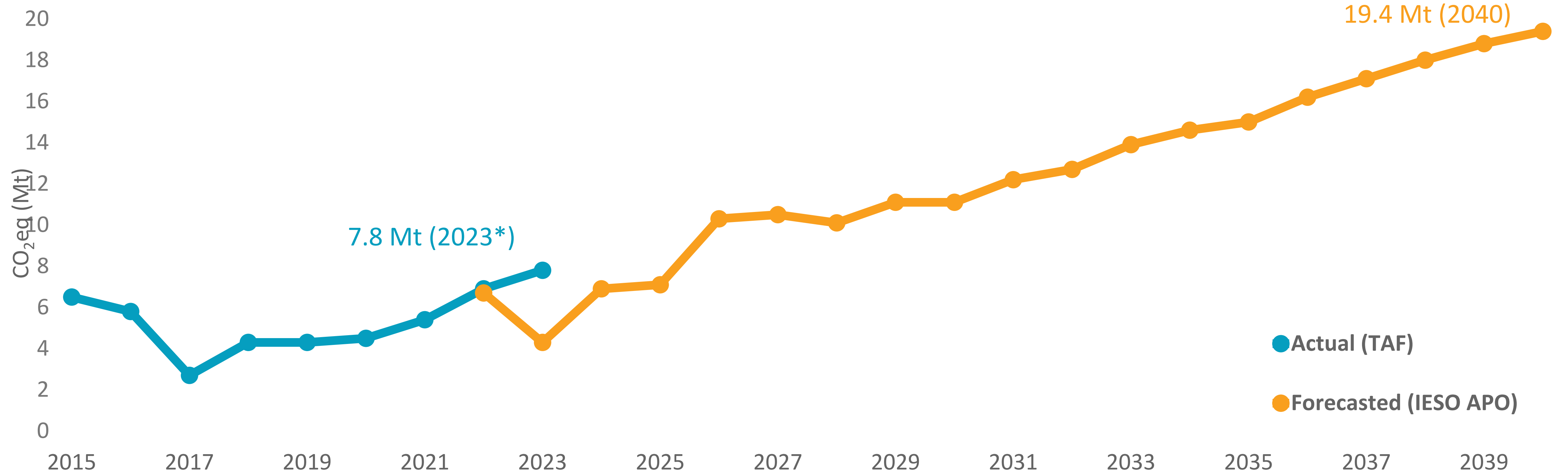
## Durham Region: Electricity Emissions, 2016-2022

▲ 26%





## Ontario electricity emissions forecast, 2015-2040



# Municipal Climate policy priorities

## Electricity

- Streamline zoning, permitting and utility connections for distributed clean energy
- Identify and support appropriate opportunities to host large scale clean energy projects

## Buildings

- Implement, manage compliance of green development standards
- Design, implement existing building performance standards

## Transportation

- Remove or relax parking minimums and require EV ready parking in all new residential parking areas
- Invest in transit service improvements and electrification

# Connect with TAF



Bryan Purcell  
VP, Policy and Programs  
[bpurcell@taf.ca](mailto:bpurcell@taf.ca)