

1635 Dundas St. East



Community Engagement and Conceptual Design Presentation
Regional Council
June 26, 2024

The Role of the Region of Durham

The Region of Durham's Social Services Department is legislated by the province of Ontario as a **Service System Manager** for Housing and Homelessness and designated by the federal government as the **Community Entity**.



Ontario Human Rights Code & Housing

- The Code prohibits discrimination in housing based on race, religion, sexual orientation, family status, disability or receipt of public assistance.

“Opposition to housing projects based on stereotypes or prejudice towards the people who will live in them can be a violation of people’s rights to be free from discrimination in housing – which means it can be against the law.”

Ontario Human Rights Commission

Housing First Model

Housing First is a program model, approach, and philosophy that has been recognized as an important policy towards ending homelessness by both the Canadian and the U.S federal governments.

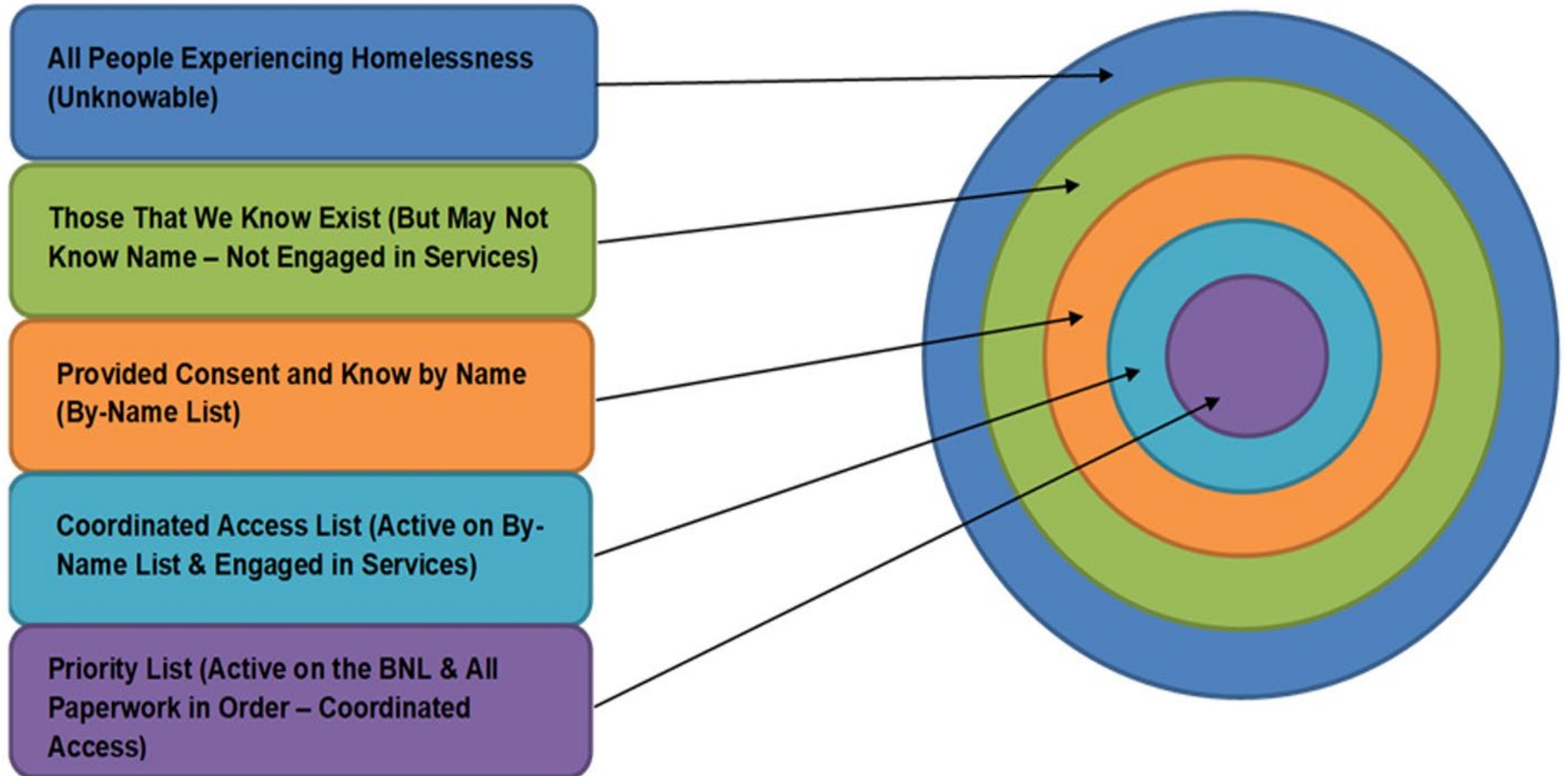


The Housing Continuum

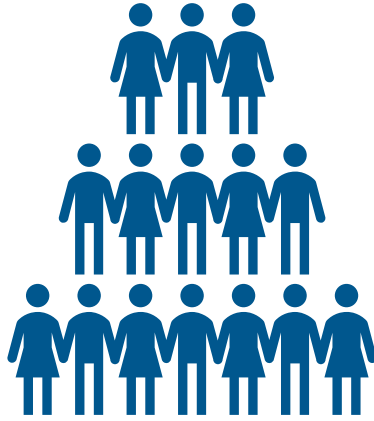


Source: Canada Mortgage and Housing Corporation, 2024.

By-Name List



Homelessness in Durham: What We Know



757

Individuals on Durham Region's By-Name List are experiencing homelessness



326

people are chronically homeless (experiencing homelessness for six months or more)



511

people demonstrate a level of acuity that would require support to get and maintain stable housing



66

people are seniors (age 60+)



90%

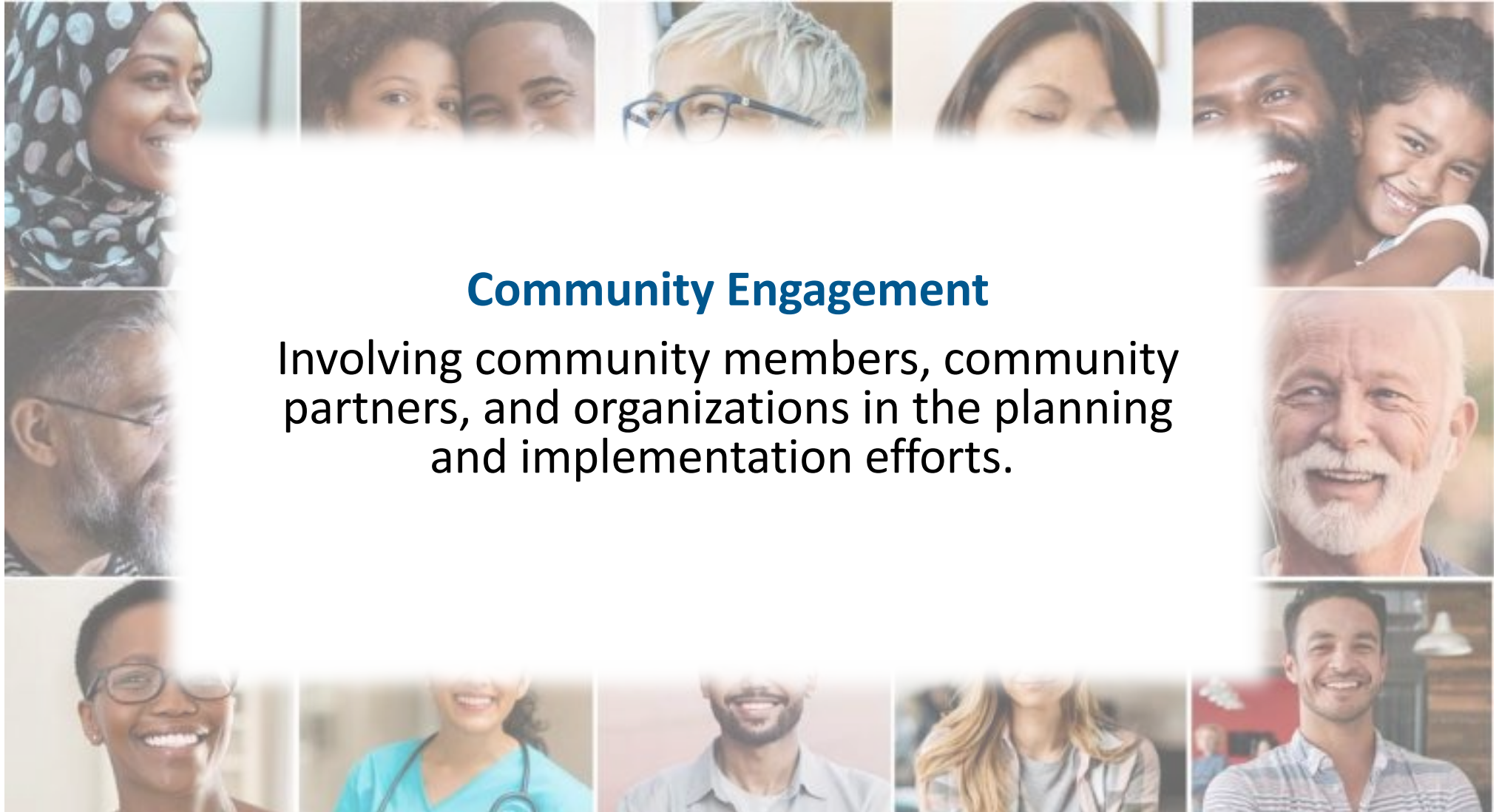
of people are single and 10% are families

1635 Dundas Street East

- With Council approval in June of 2023, the Region purchased for the purpose of retrofitting a previous long-term care home for emergency and supportive housing use.
 - Phase 1 – 45 emergency shelter beds
 - Phase 2 – supportive housing and other uses to be defined by community engagement



1635 Dundas Community Engagement

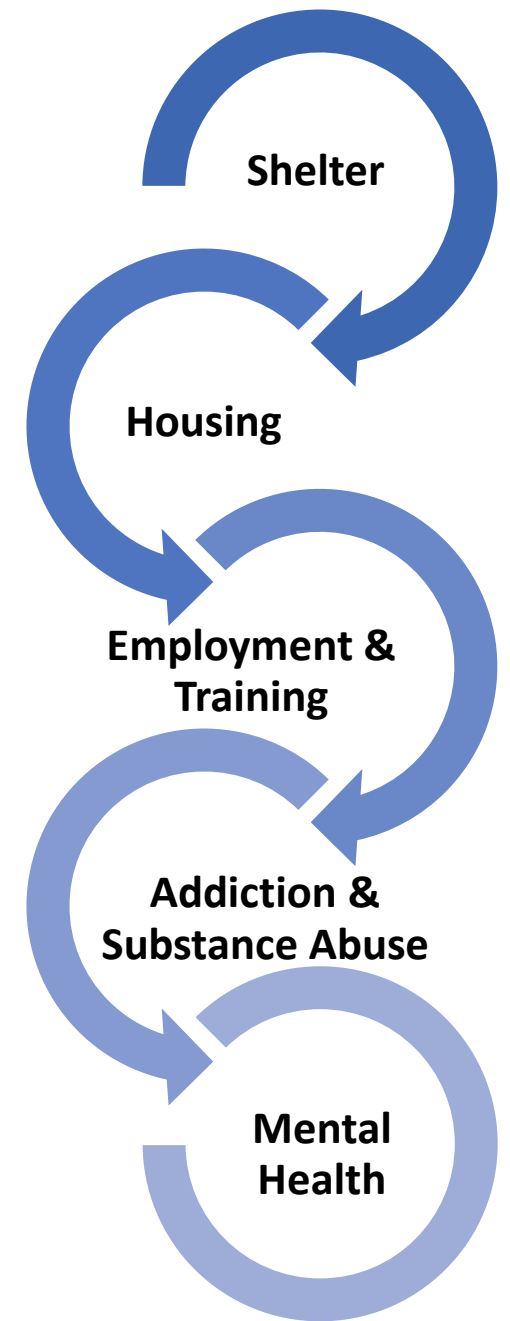


Community Engagement

Involving community members, community partners, and organizations in the planning and implementation efforts.

Phase 1: Community Input - What We Heard...

<p>Key Questions Town Halls & Community Survey</p>	<ul style="list-style-type: none"> • How might 1635 Dundas address the needs, priorities, and service gaps in the community? • What is your vision for the 1635 site in addressing the homelessness crisis in Durham Region?
<p>Community Feedback</p>	<ul style="list-style-type: none"> • Individual units that provide housing with supports are necessary. • Congregate and emergency shelter spaces are a band-aid, not a solution. • Provide safe spaces for the supports people need. • Ensure youth, families and seniors are considered. • Safety for the community and for those moving in. • Recovery and rehabilitation programs should be a priority. • People who are unsheltered need physical health supports including palliative care. • Social enterprise options. • Food security is important for people to thrive. • Next steps for Phase 2: would like continue to be involved throughout the engagement process.



Phase 2 Community Engagement Framework



Inform	Consult	Involve	Collaborate
Share information to build awareness and understanding.	<p>Listen and learn through dialogue with the community.</p> <p>Test ideas, concepts and develop solutions.</p>	Work directly with the community to develop alternatives, solutions and/or recommendations to ensure the community’s concerns and aspirations are understood and considered.	Partner with the public to develop recommendations or solutions.

Ways to Provide Input

June

- Online survey available (until September 27, 2024)
- Website subscriber update
- News release and noted in Council summary

July/Aug

- Newsletter to neighbourhood
- Ongoing conversations with service delivery partners
- Continued availability of survey

September

- Engagement sessions with health care providers and Durham College
- Paid social media promotions to enhance awareness of survey

Who we are partnering with:

Lakeridge Health – mental health and addictions recovery

Ontario Shores – housing to transition people into the community

Saint Elizabeth Health Care – palliative care

Victim Services of Durham Region – victims of crime or tragedy

Durham College – support programming, academic and research opportunities

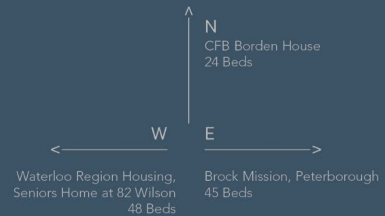
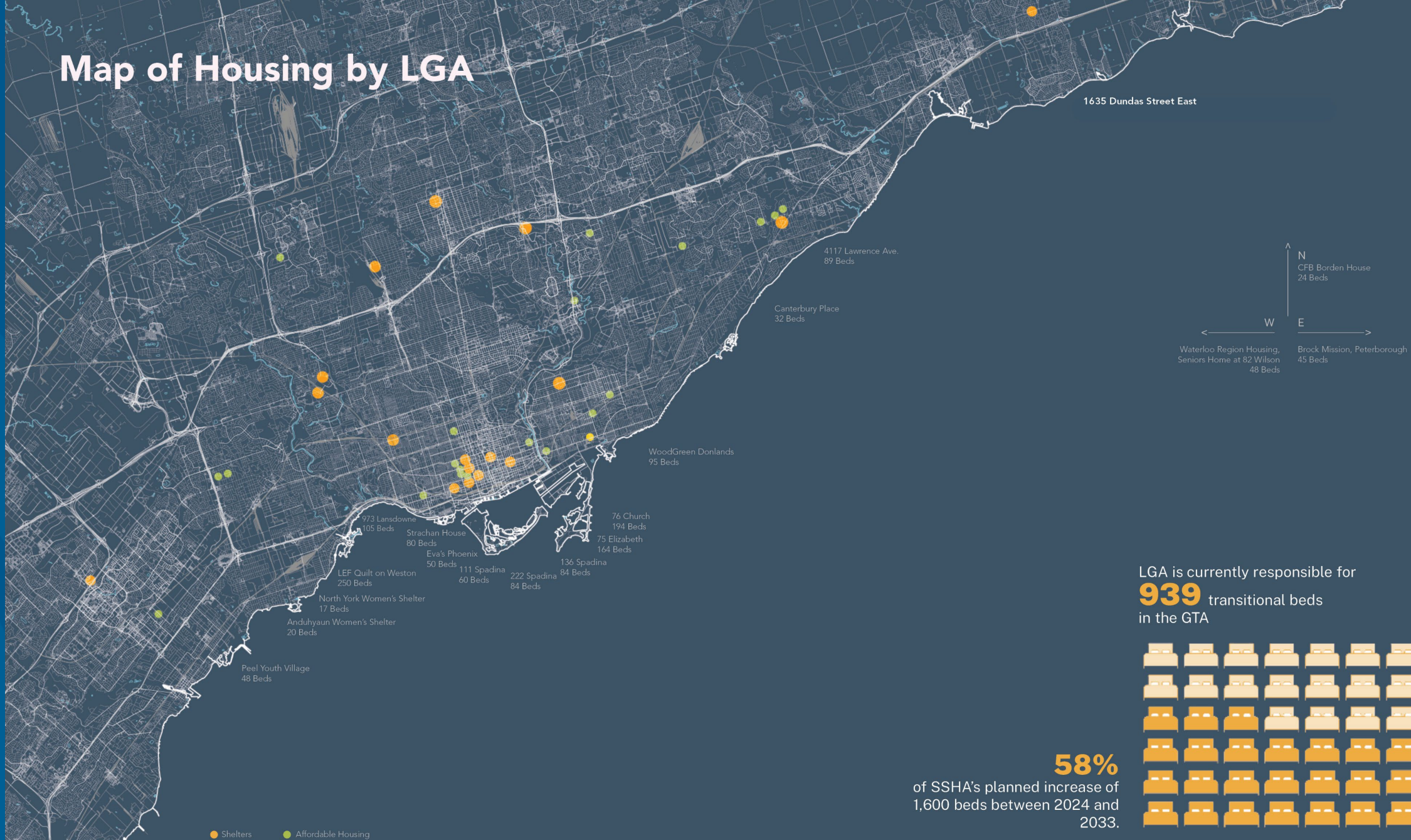
LGA architectural
partners

rjc Creative Thinking
Practical Results

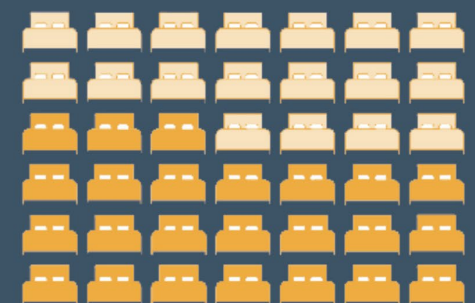
Durham Region

1635 Dundas Street East

Map of Housing by LGA



LGA is currently responsible for **939** transitional beds in the GTA



58% of SSHA's planned increase of 1,600 beds between 2024 and 2033.

Over the past 34 years,
LGA has been responsible for a total of

4,168

affordable housing units in Ontario.



(New Build)



(Retrofitted)



*(Planning Approved,
Design or Construction)*



(Masterplan/Studies)

Thresholds and Common Spaces



Eva's Phoenix Brant St | Toronto



Peel Youth Village | Toronto

Landscaping as a release valve



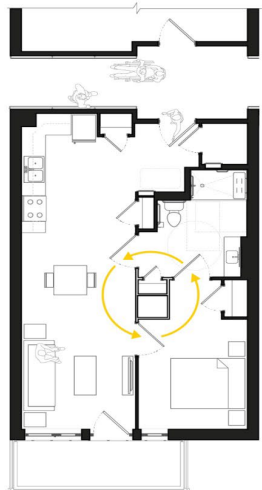
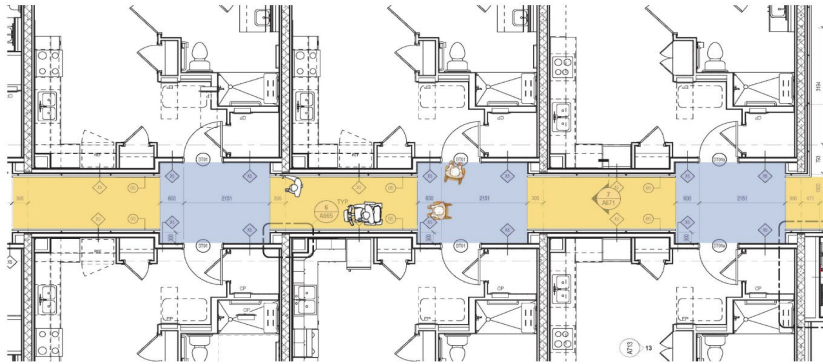
NCFST Native Child and Family Life Centre | Toronto



NCFST Centre for Native Child & Well Being | Toronto

Equitable Pathways

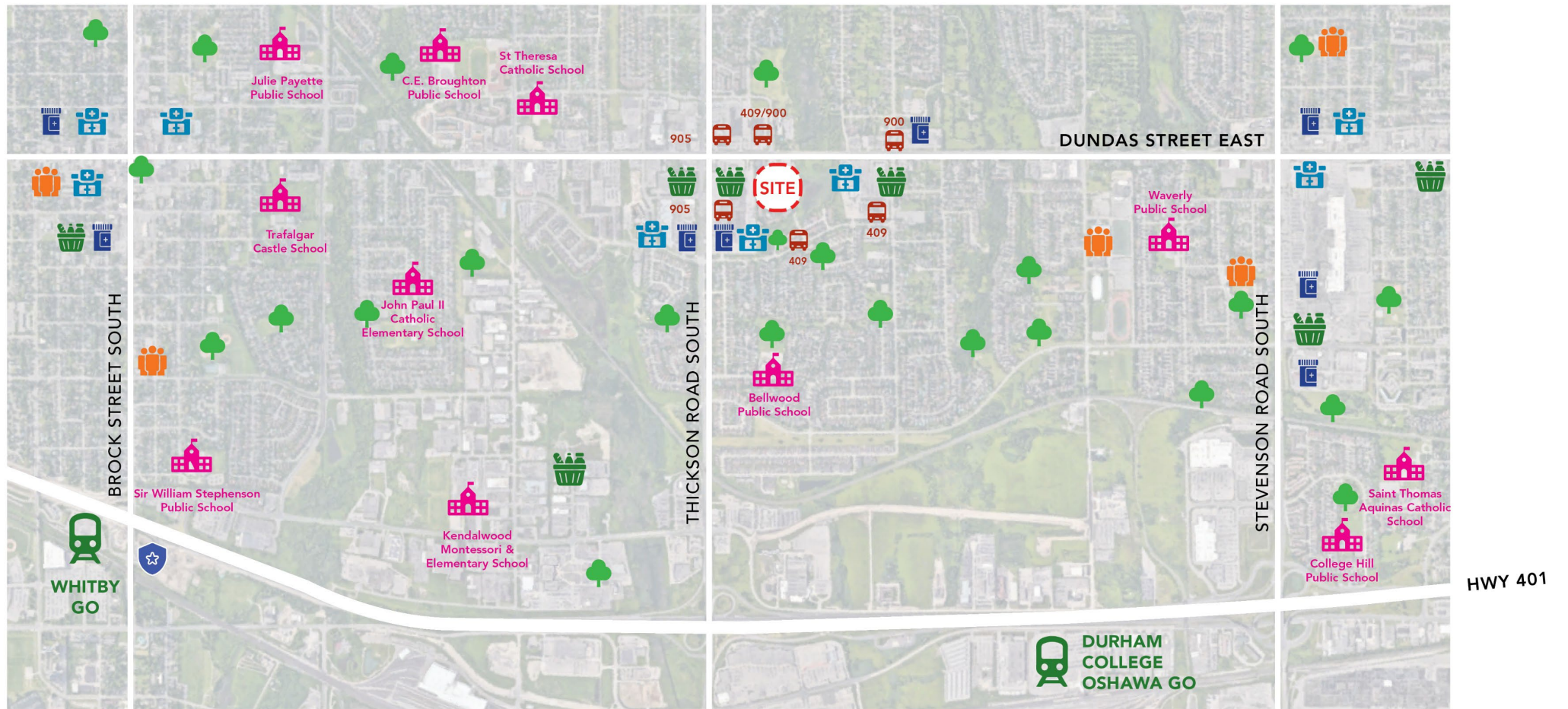
82 Wilson | Waterloo



Eva's Phoenix Brant St | Toronto

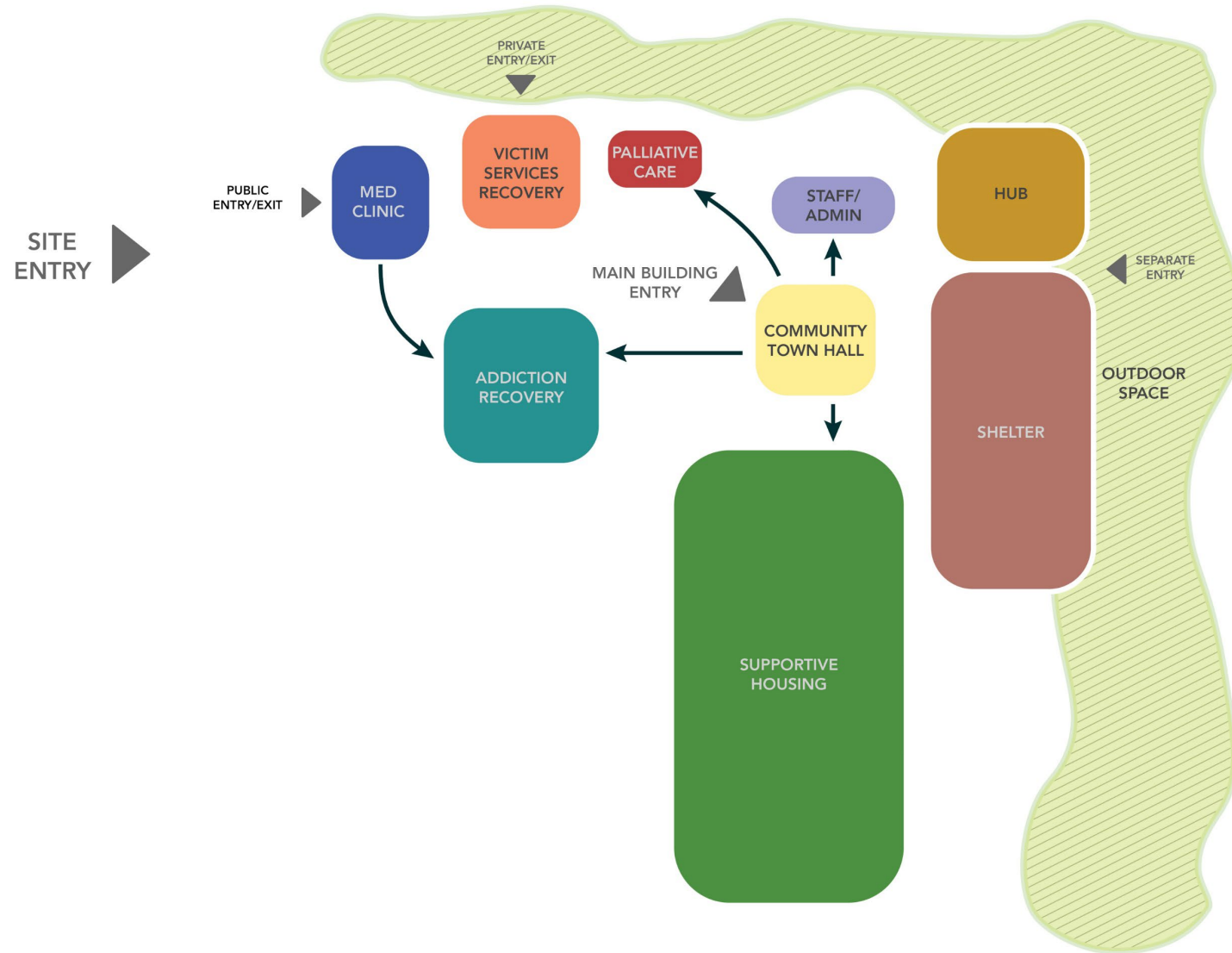
Understanding the Community

Context Plan



- Bus Stop
- School
- Parks
- Clinic
- Go Train Station
- Community/Rec Centre
- Grocery
- Pharmacy
- Police Stations

Programming

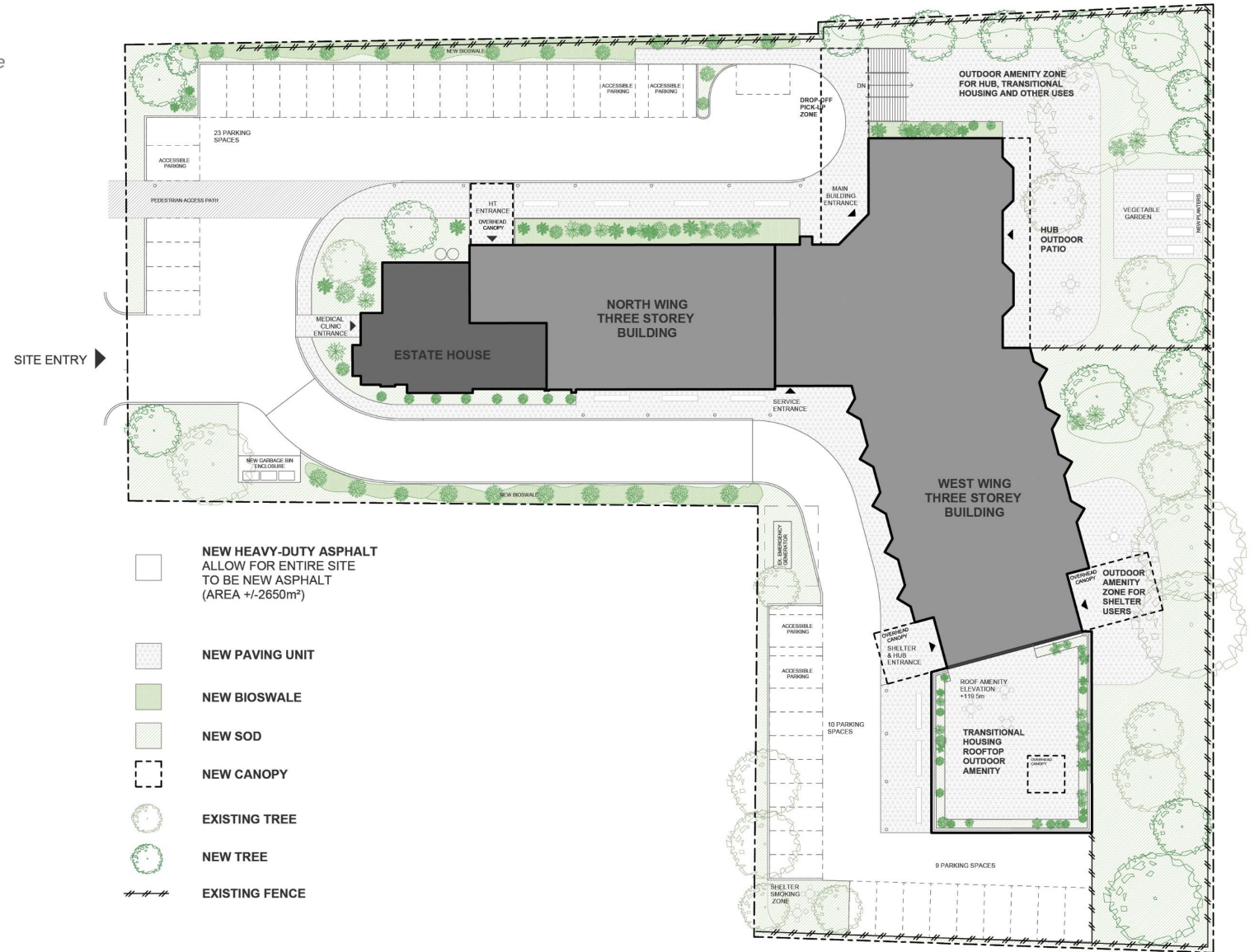


Concept Site Plan

N  *This is a Concept Scheme and is Subject to Change

Proposed Site Statistics

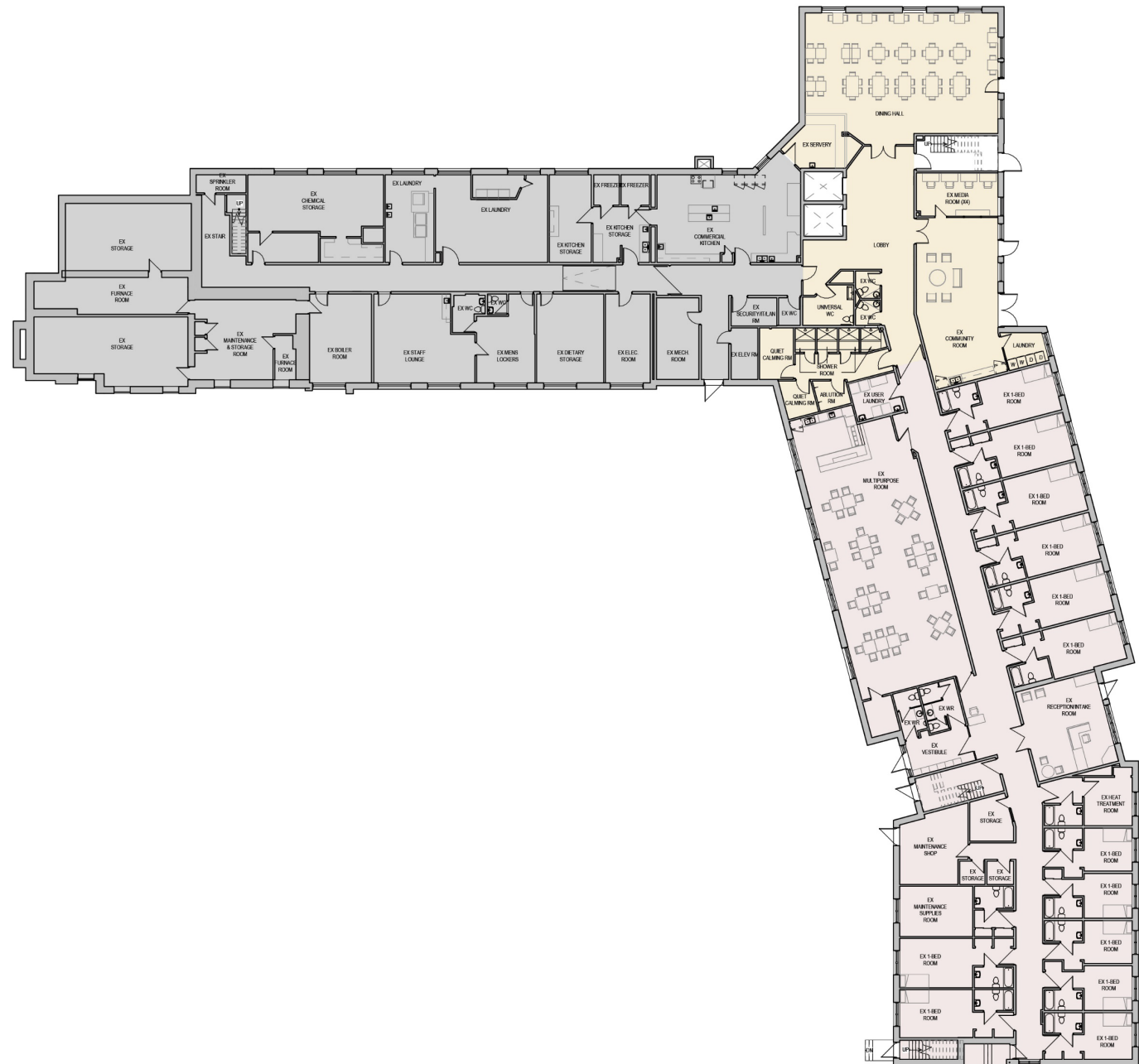
42 Parking Spaces
 5 Accessible Parking Spaces (11%)
 3 Barrier-free entrances



Concept Plan

N Lower Level

**This is a Concept Scheme and is Subject to Change*



Maintenance/Storage

Hub

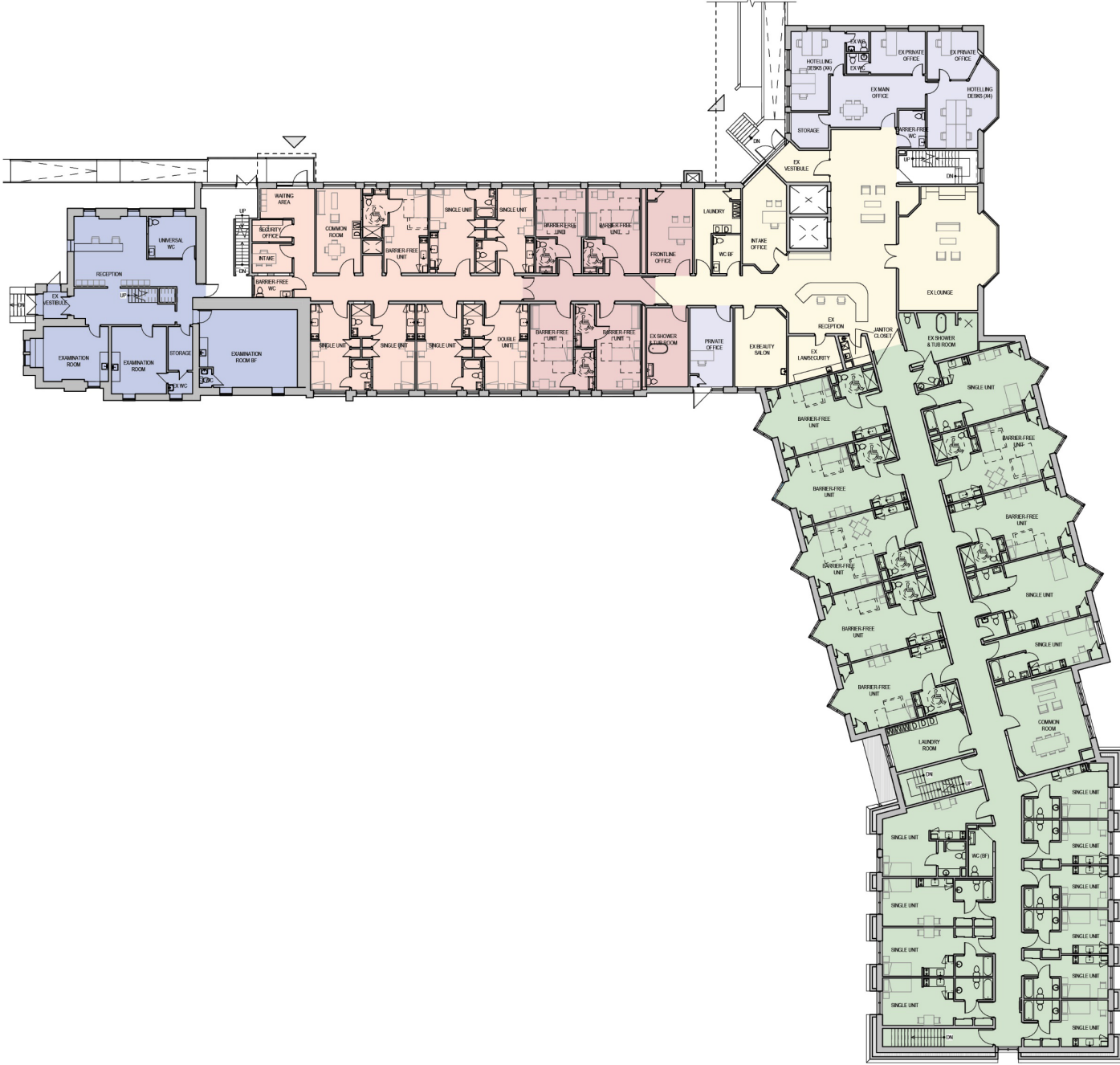
Low-Barrier Shelter
 13 Units (26 Beds)
 0 Barrier-Free Units
 13 Double Units

Total Unit Count
 70 Units
 14 Barrier-Free Units (20%)
 23 Double Units (32%)

Concept Plan

N Ground Level

**This is a Concept Scheme and is Subject to Change*



- Administrative Space**
- Reception/Community Spaces**
- Medical Clinic**
- Supportive Housing (Cluster 1)**
20 Units (20 beds)
7 Barrier-Free Units
- Victim Services Recovery**
7 Units (8 Beds)
1 Barrier-Free Unit
1 Double Unit
- Palliative Care**
4 Units (4 Beds)
4 Barrier-Free Units
0 Double Units

Total Unit Count
70 Units
14 Barrier-Free Units (20%)
23 Double Units (32%)

Concept Plan

N  **Upper Level**

**This is a Concept Scheme and is Subject to Change*



Administrative Space

Reception/Community Spaces

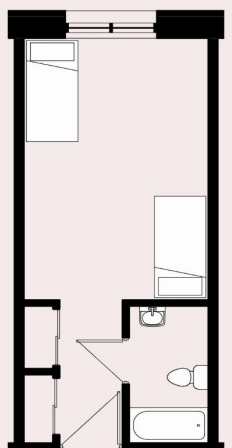
Medical Clinic

Supportive Housing (Cluster 2)
 13 Units (20 beds)
 7 Double Units

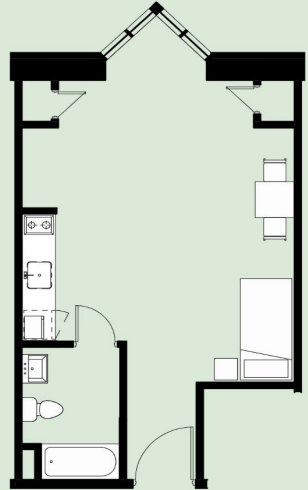
Addictions Recovery
 13 Units (15 Beds)
 2 Barrier-Free Units
 2 Double Units

Total Unit Count
 70 Units
 14 Barrier-Free Units (20%)
 23 Double Units (32%)

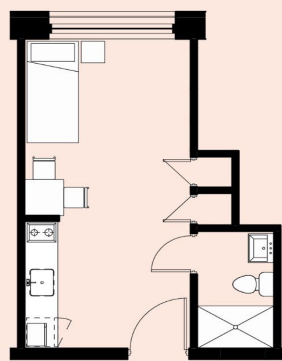
Concept Unit Plans



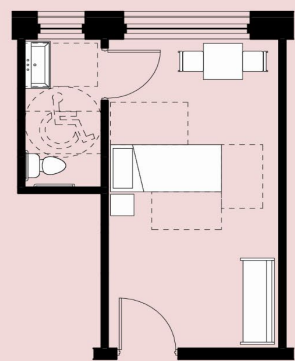
Low Barrier Shelter Units
 Double occupancy
 Ensuite 3-piece bathroom



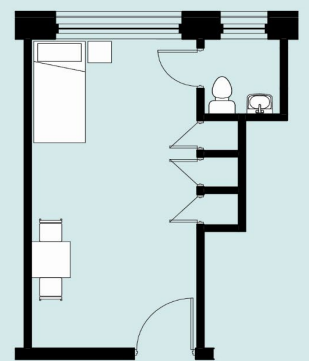
Supportive Housing Units
 Single and double occupancy
 Ensuite 3-piece bathroom
 Ensuite Kitchenette



Human Trafficking Recovery Units
 Single and double occupancy
 Ensuite 3-piece bathroom
 Ensuite Kitchenette



Palliative Care Units
 Single occupancy
 Ensuite 2-piece bathroom



Addictions Recovery Units
 Single and double occupancy
 Ensuite 2-piece bathroom

Concept Render

**This is a Concept Scheme and is Subject to Change*



Next Steps

Launch 1635 Engagement, Phase 2

- Project webpage will alert subscribers with updates
- Community Survey will be launched and promoted through:
 - Your Voice Durham
 - Social media
 - Regional Street Outreach Program
 - Newsletters
- Continuing to partner with Community Agencies to develop future program plans
- Present at Whitby Town Council in the fall to showcase survey results and new partnerships





DURHAM REGION | FIFTY YEARS

Thank You!

Questions?

Jennifer Bishop

Project Manager

Affordable Housing Development &
Renewal

Jennifer.Bishop@durham.ca

Alexander Tedesco

OAA, BSSO, BES, BArch
Partner

LGA architectural
partners

durham.ca/50years | durham.ca

[@RegionofDurham](#)

