



Canadian Nuclear
Laboratories | Laboratoires Nucléaires
Canadiens

Port Hope Area Initiative

Durham Nuclear Health Committee

September 13, 2024



Waterworks West August 2024



Canadian Nuclear
Laboratories | Laboratoires Nucléaires
Canadiens



Land Acknowledgment

Outline

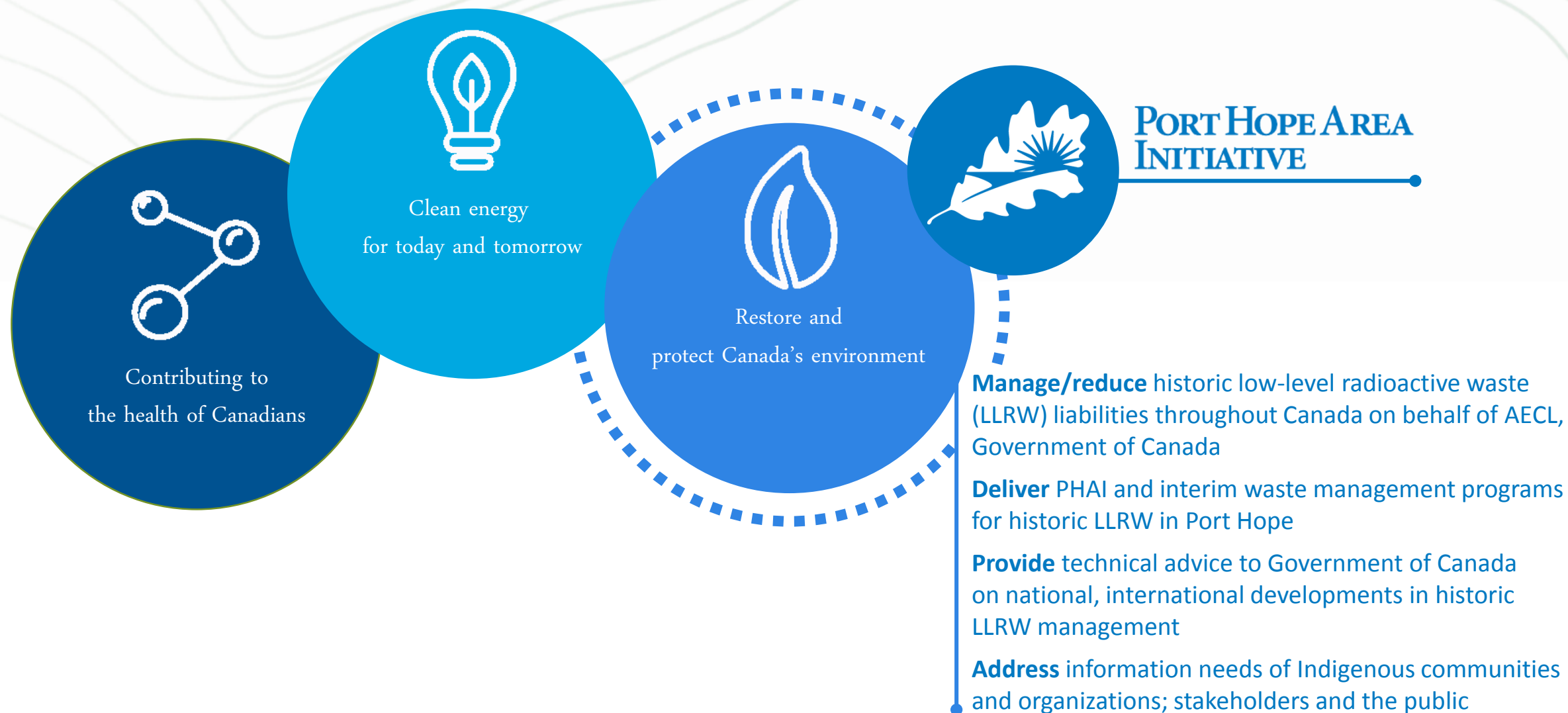
Port Hope Area Initiative

- Port Hope Project Status Update
- Environmental Assessment Commitments
- Port Granby Project Status Update

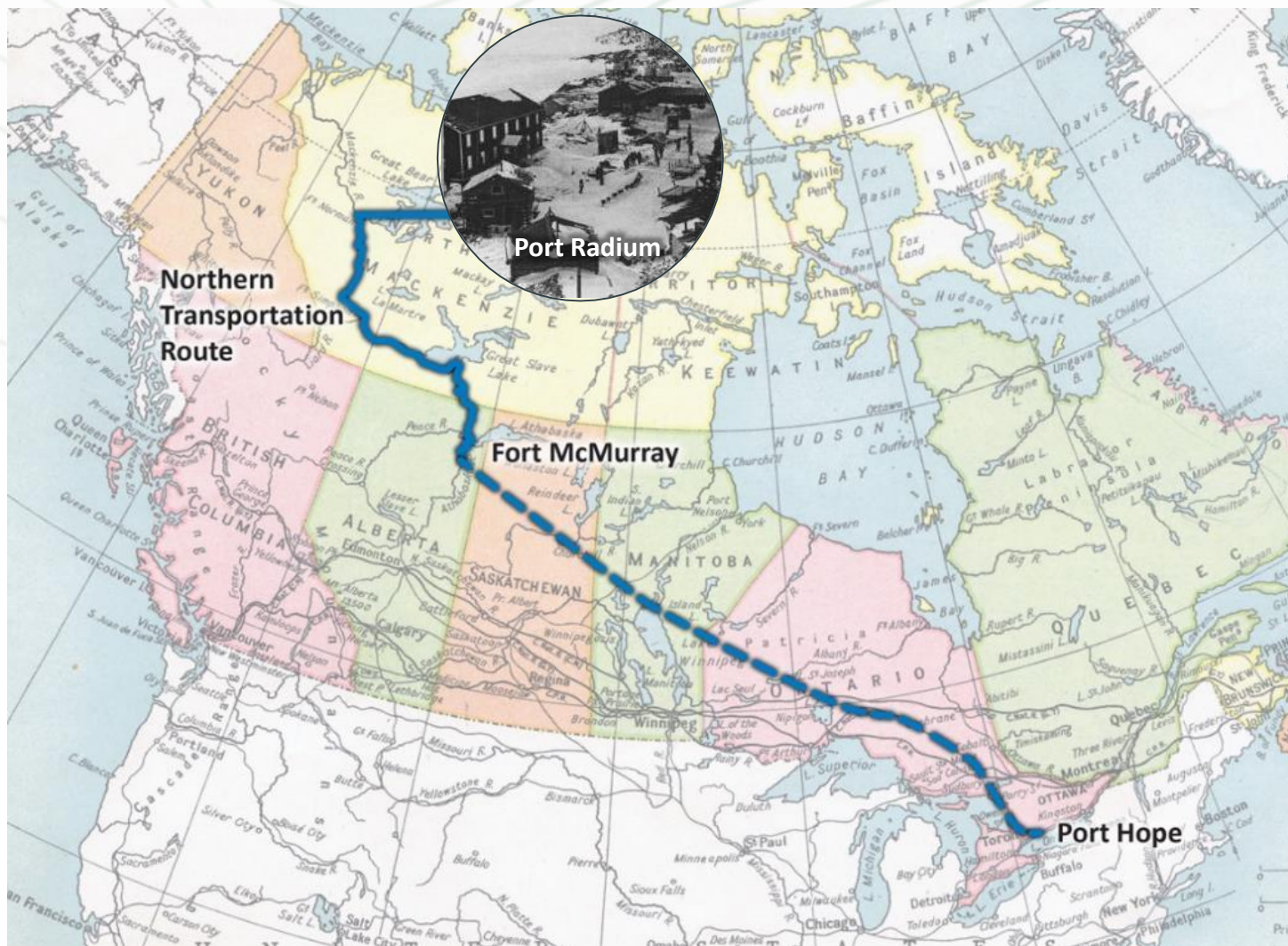


Port Hope site

Canadian Nuclear Laboratories – Strategic Priorities



Community-Requested Project



Mid-1970s LLRW
problem identified



1976-82 Initial Cleanup
100,000 m³ to Chalk River



1986-96 Independent Siting Task Force
province-wide search unsuccessful



1997-99 Community Solutions
brought to federal government

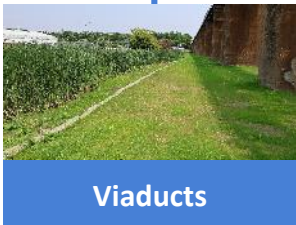
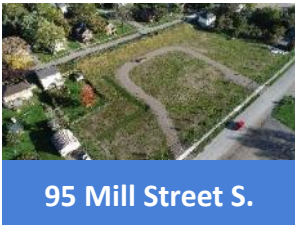
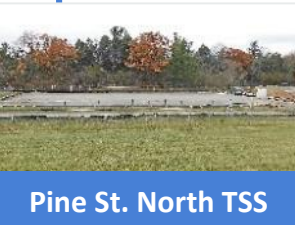


2001 Legal Agreement
Canada, Clarington,
Town of Port Hope, Hope Township

Port Hope Project Status

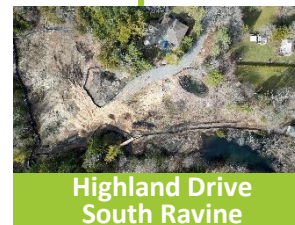
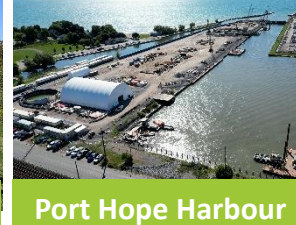
WORK COMPLETED

2,100,000 tonnes waste safely stored
at LTWMF as of August 2024



More than 192 Private Properties completed

WORK UNDERWAY



Approximately 90 Private Properties scheduled

2018

2019

2021

2022

2023

2024

Industrial Sites



Chemetron Lagoon August 2024



Lions Park August 2024



Former Coal Gasification Plant August 2024



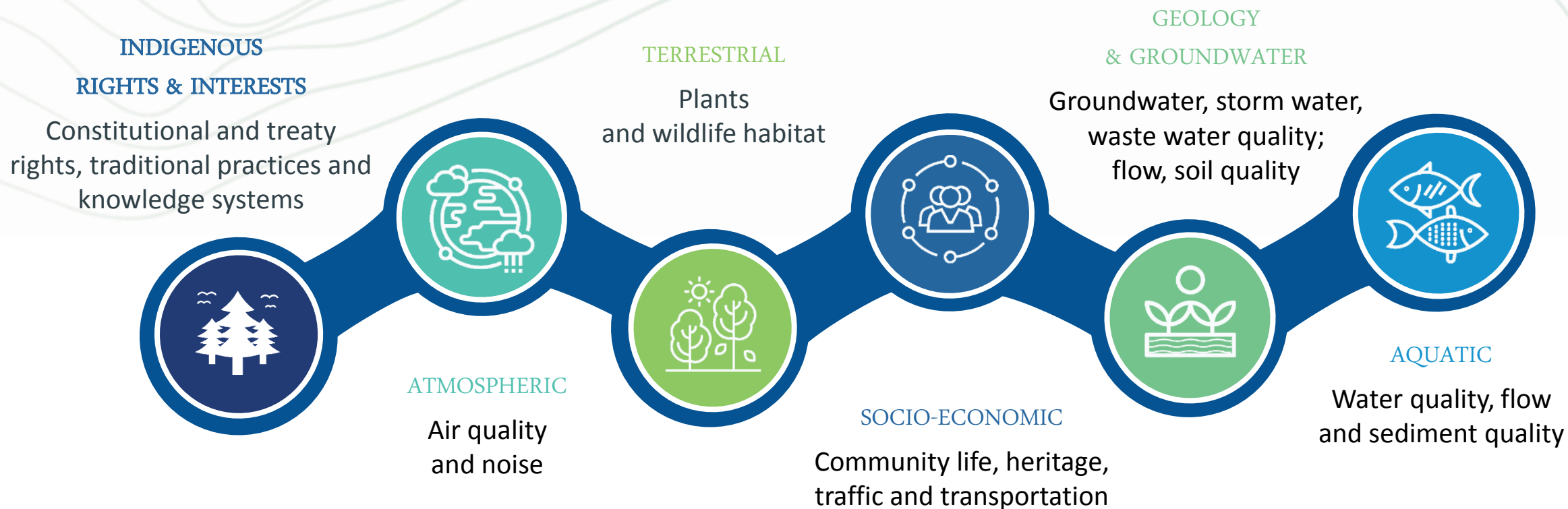
Sculthorpe Marsh August 2024



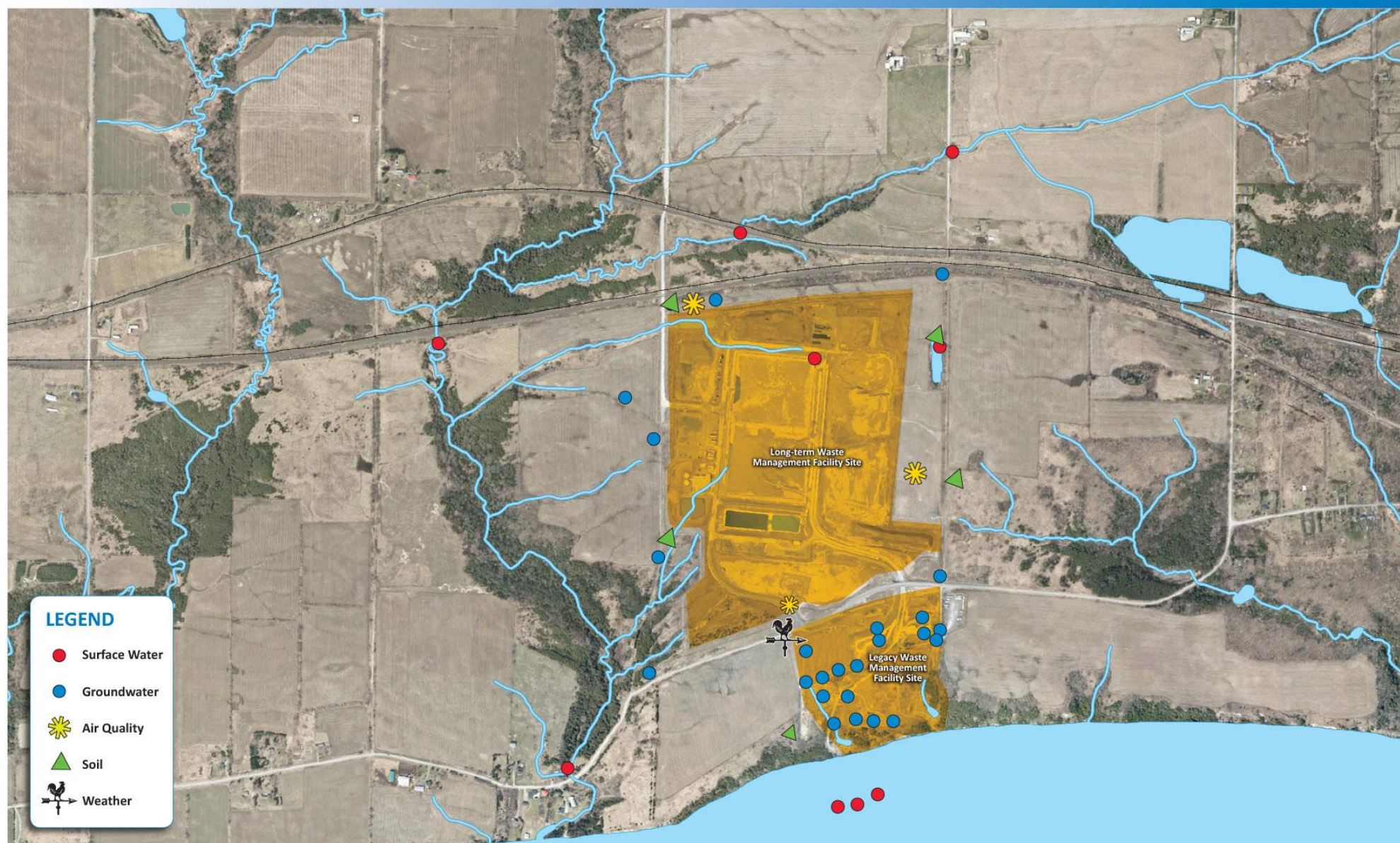
Port Hope Long-Term Waste Management Facility



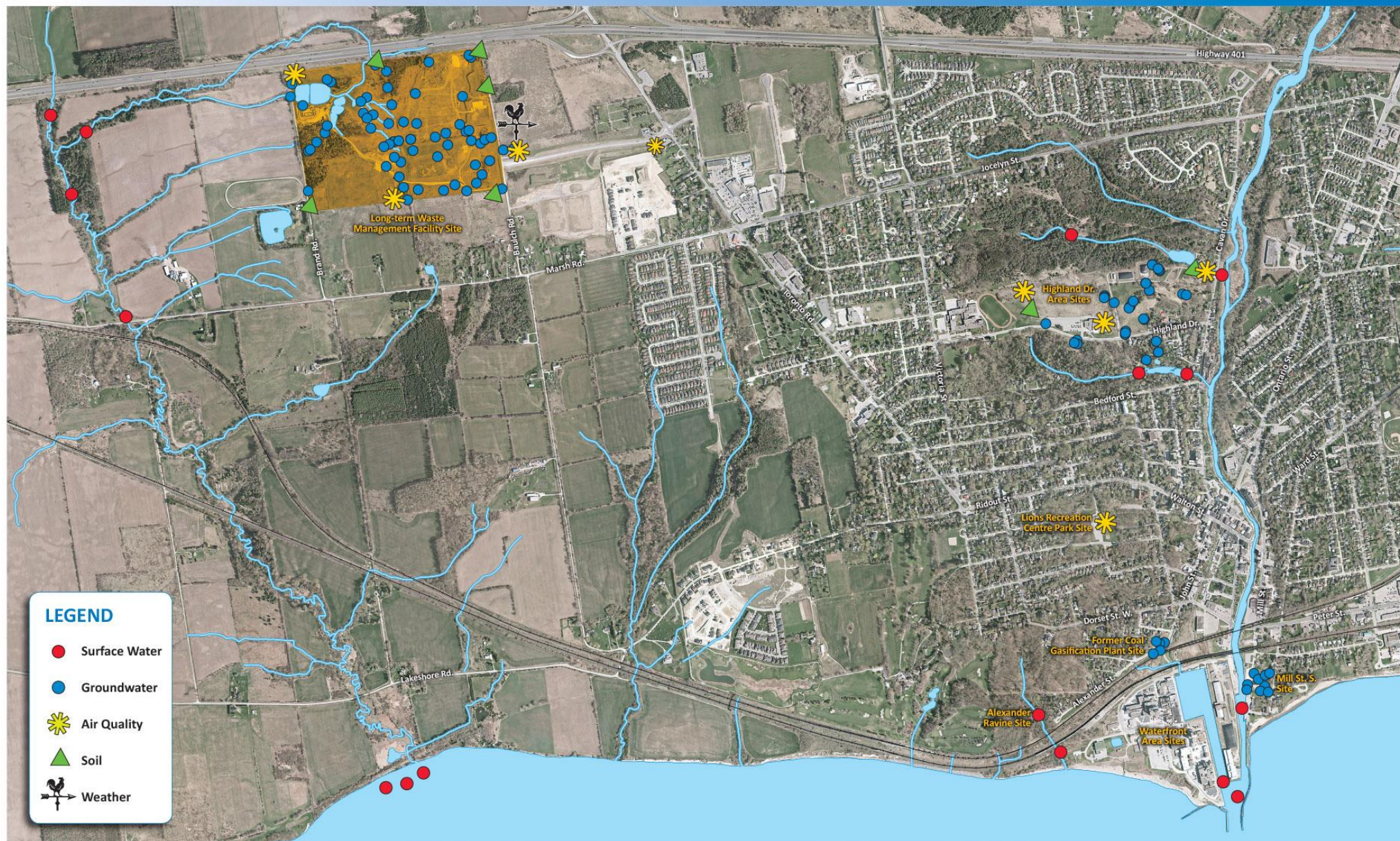
Environmental Assessment Follow Up Program



Environmental Monitoring Locations



Environmental Monitoring Locations



Port Granby Project

Current Status



Phase 3 Site Activity

- Contractor demobilized as of December 2022 - fewer workers on site
- Significantly less truck traffic on haul route
- Minimal activity while maintaining all safety standards and ongoing environmental monitoring

Long-Term Environmental Monitoring



Waste Water Treatment

- Storage mound leachate collection
- Treatment plant output to licensed, offsite storage
- East Gorge groundwater collection



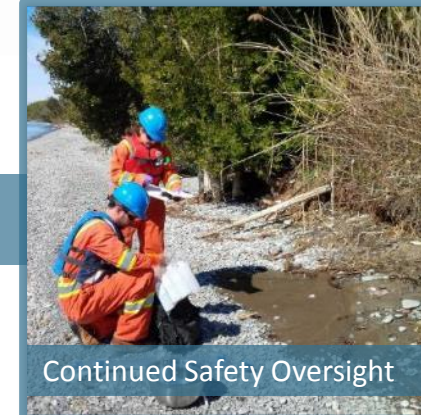
LTWMF Monitoring

- Site remains fenced
- Mound surface, internal sensors
- Grounds monitored, maintained



Environmental Monitoring

- Air, Soil
- Plants; wildlife
- Water; groundwater



Continued Safety Oversight

- Plans in place to ensure any event is properly managed
- Minimize risk to people and environment

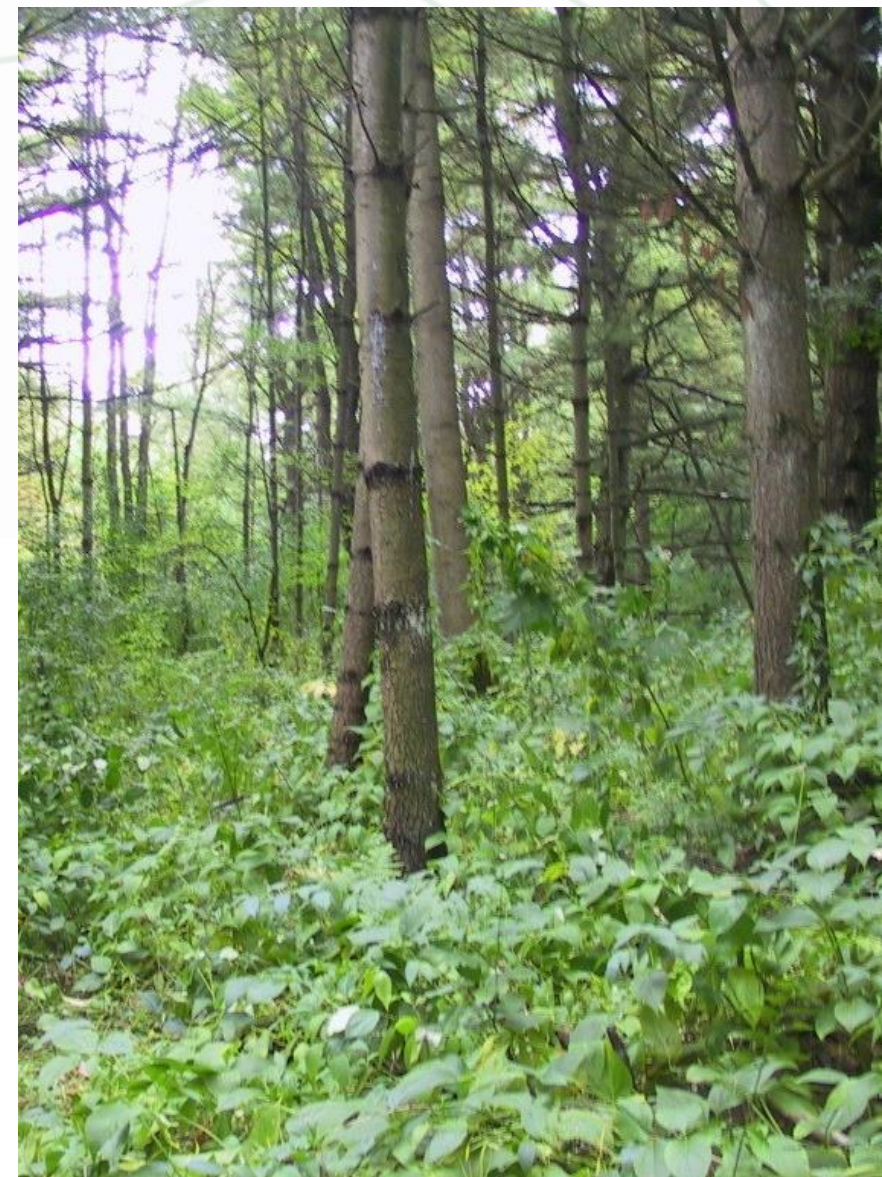
Project Performance

- Safety and protection of people and the environment remain top priority
- Comprehensive monitoring and mitigation measures to minimize adverse environmental impact
- Solid management system supports PHAI implementation in compliance with regulatory and industry best practices
- CNL continues to successfully manage health and safety obligations and build a culture of excellence in safety
- CNL continues to meet all licence and reporting requirements



Our Commitments

- **Continue** commitment to truth and reconciliation with Indigenous communities
- **Complete** PHAI projects safely and compliantly:
 - Protection of people and the environment remain top priority
 - Continue to meet all licence and reporting requirements
- **Maintain** solid management system to support PHAI activities in compliance with regulatory and industry best practices
- **Manage** health and safety obligations and work on building a culture of excellence in safety
- **Work** towards a cleaner environment - restoring land for future generations





Miigwetch. Thank you. Merci



info@phai.ca



PH.Area.Initiative



@PHAI_PORT_HOPE



PHAI.ca



Phai_porthope



CNL's Port Hope Area Initiative

