

# Uxbridge Hospital Redevelopment

**Jo-anne Marr, President & CEO, Oak Valley Health**

**February 14, 2023**

# Uxbridge campus of care



- A New long-term care
- B New Uxbridge Hospital
- C Recently opened medical building - Oak Tree Medical Centre
- D New parking in place of old hospital location



# Population served by Uxbridge Hospital

## 2021/22 Emergency Department visits by municipality:

**52.9% ➡ Uxbridge**

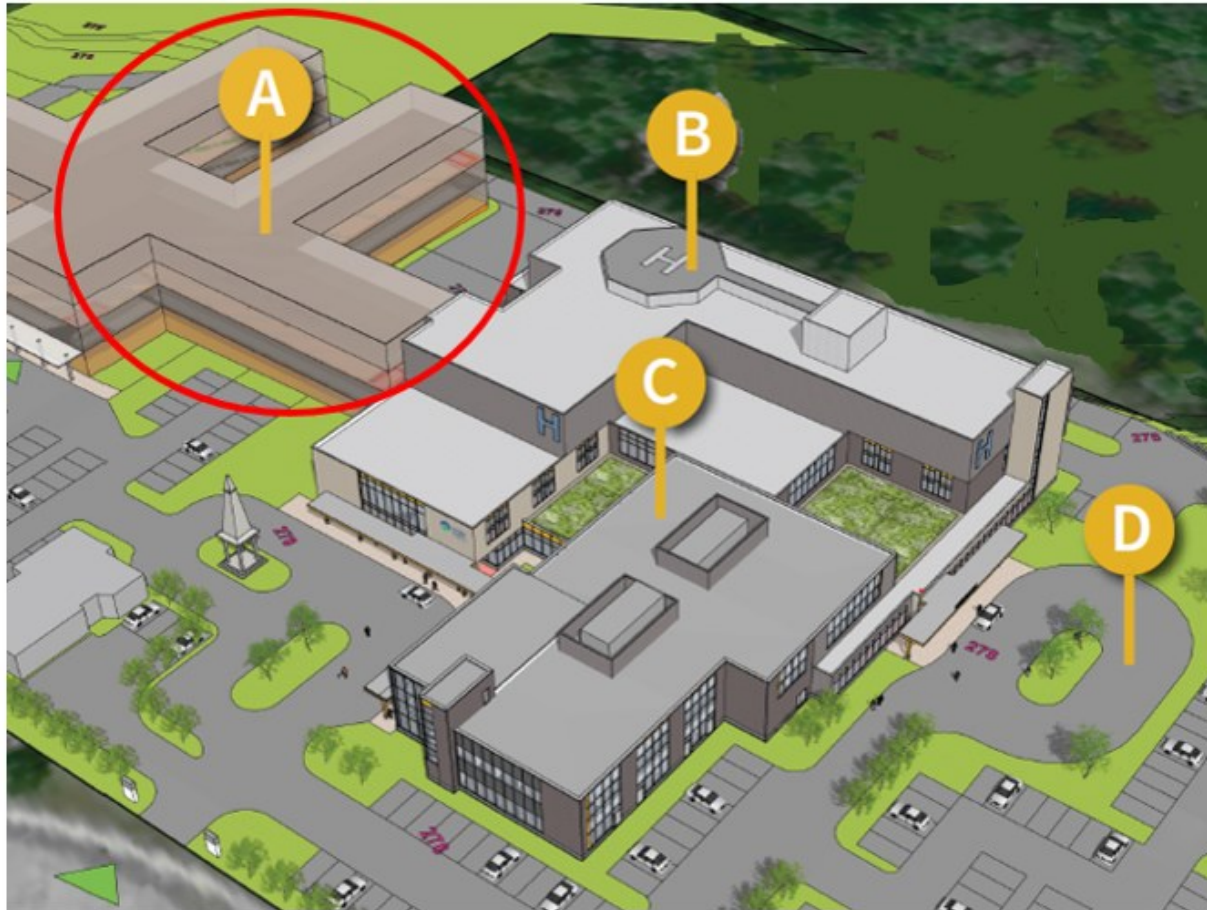
**12.2% ➡ Georgina & East Gwillimbury**

**11.8% ➡ Brock Township**

**5.6% ➡ Whitby, Ajax, Pickering & Oshawa**

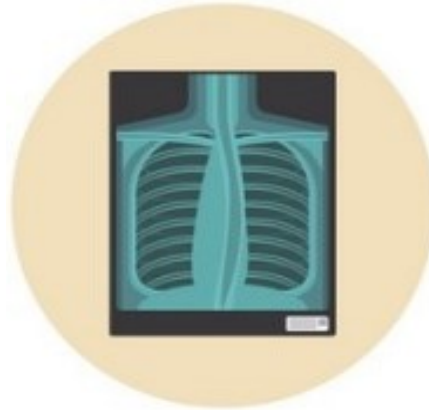
**2.7% ➡ Scugog**

# Meeting long-term care needs



- A** New long-term care
- B** New Uxbridge Hospital
- C** Recently opened medical building - Oak Tree Medical Centre
- D** New parking in place of old hospital location

# Enhanced services



# Regional support

**7.5% → approx. \$10 million**

# Thank You