



# 2024 Pickering and Darlington Nuclear Groundwater Monitoring Program Results

DNHC Update | September 2025



ONTARIO **POWER**  
GENERATION

---

# Annual Program Objectives

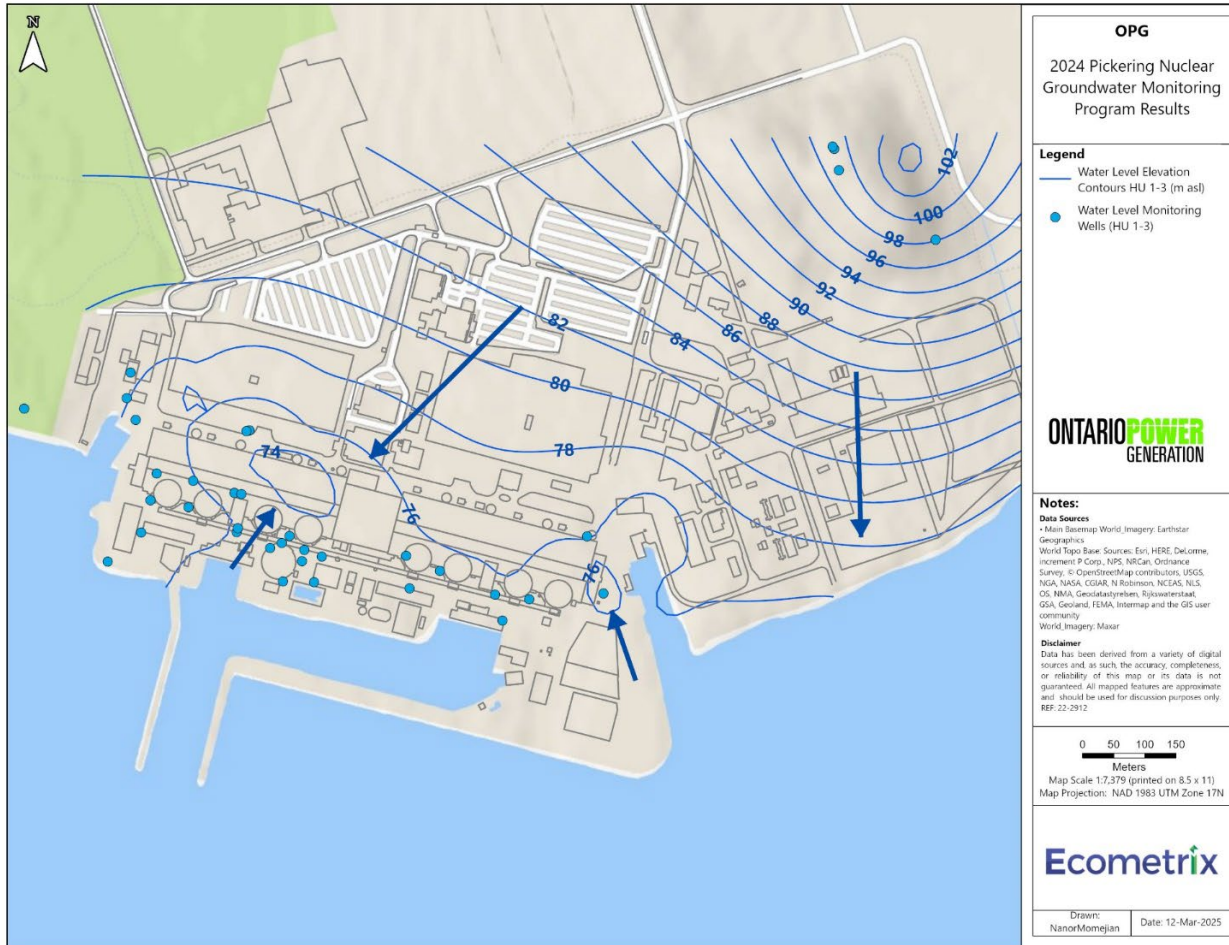
- Verify groundwater flow direction
- Monitor changes to on-site groundwater quality to identify new issues in a timely manner and assess historical issues
- Monitor groundwater quality at the site boundary to confirm there are no off-site impacts



# PN | Program Overview

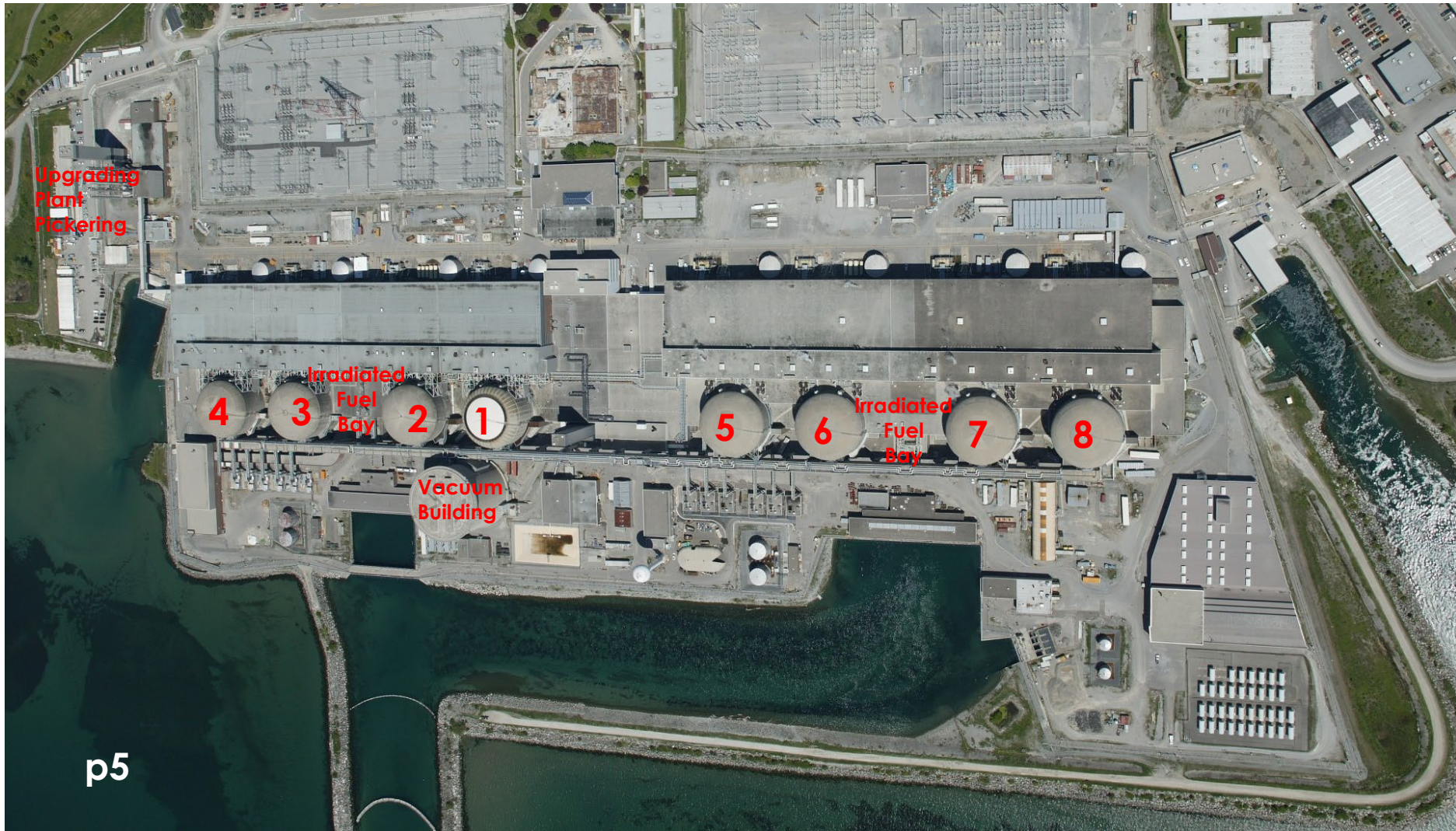


# Groundwater Flow Direction



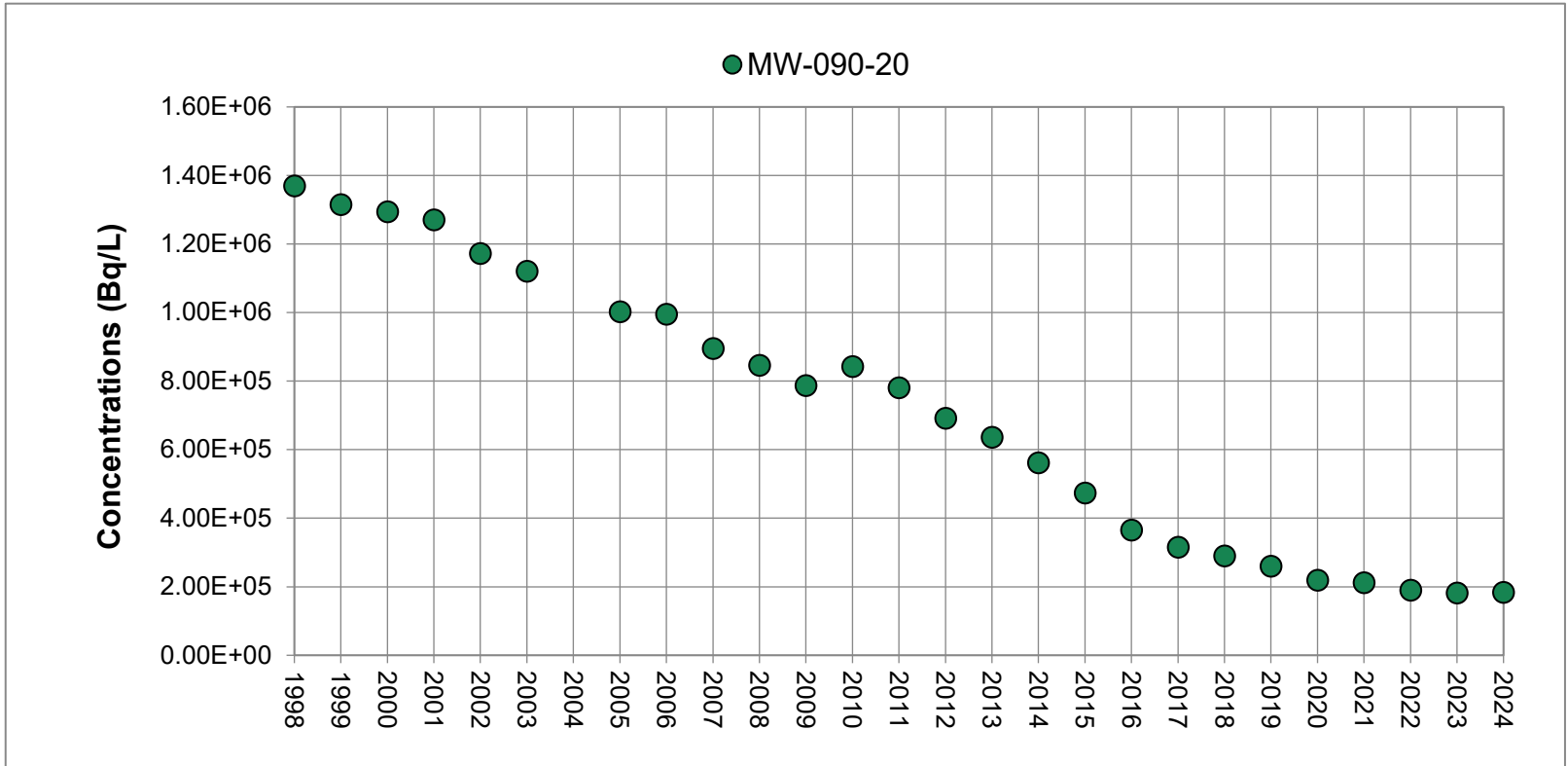
# PN | Groundwater Quality

Key Areas Monitored



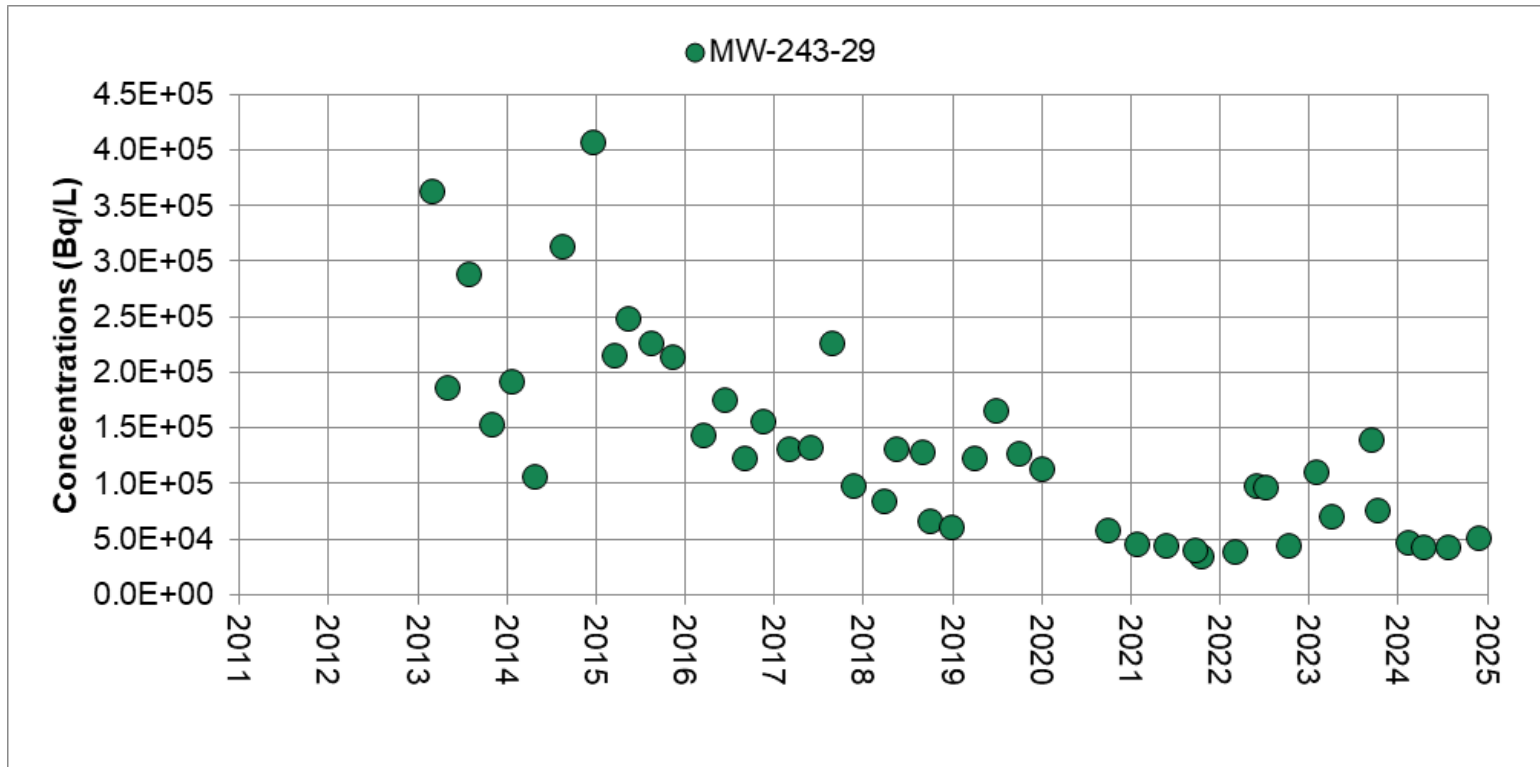
# PN | Groundwater Quality

Upgrading Plant Pickering



# PN | Groundwater Quality

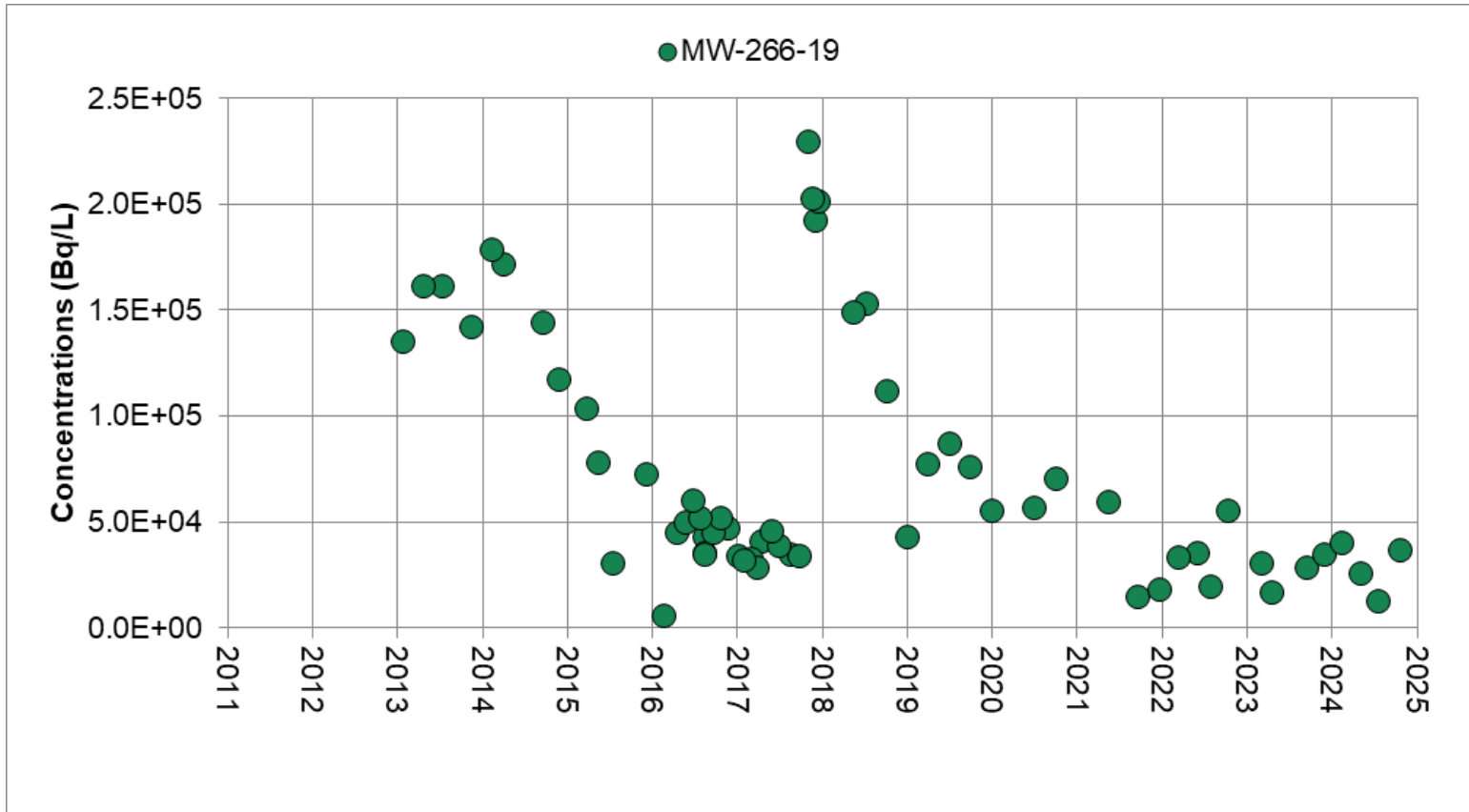
Unit 3 and Unit 4 Areas





# PN | Groundwater Quality

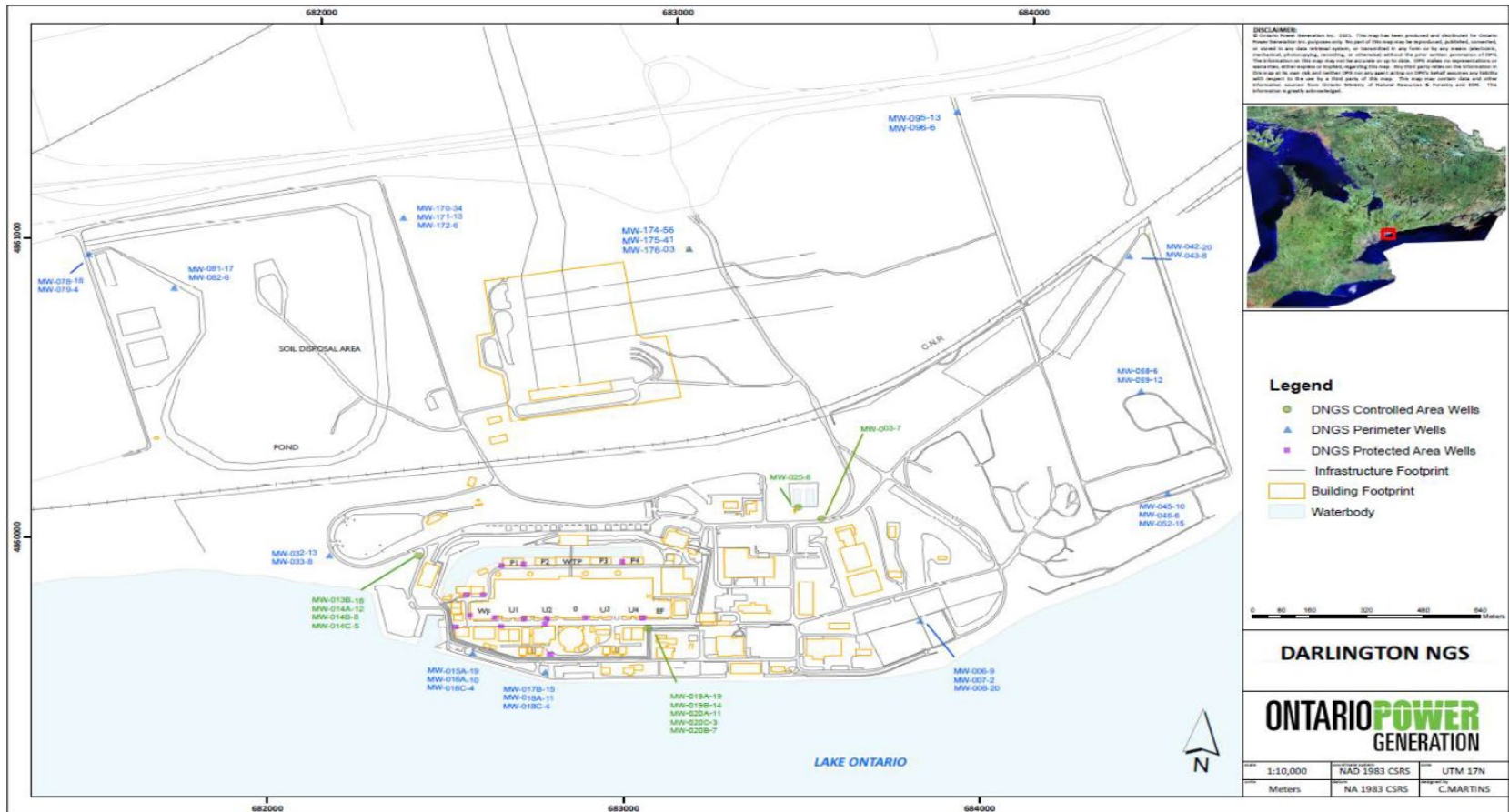
Unit 5 and Unit 6 Areas



# PN | Site Boundary Groundwater Quality



# DN | Program Overview



✓ 75 sampling locations

✓ 220 samples



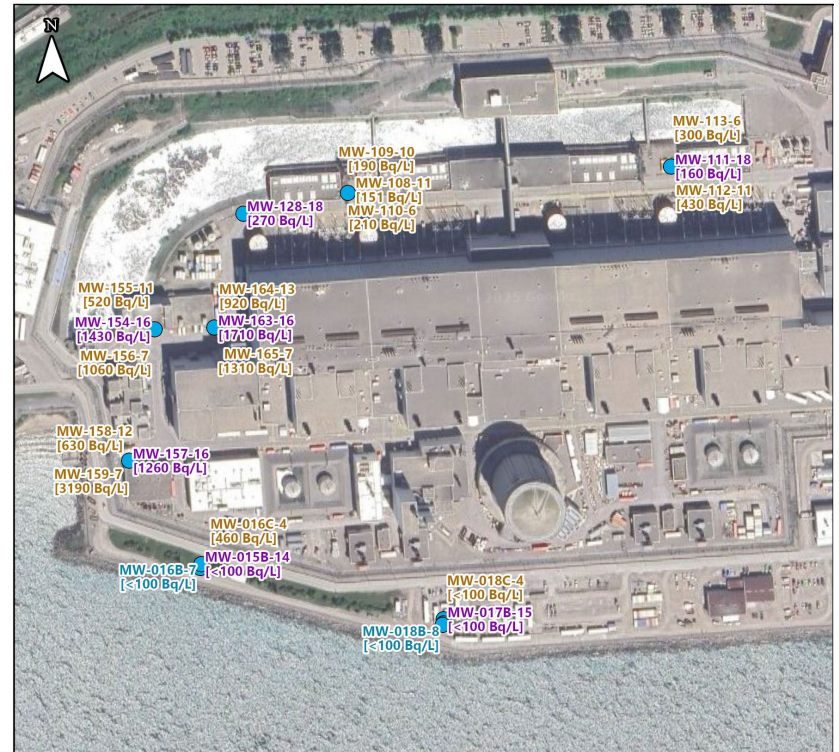
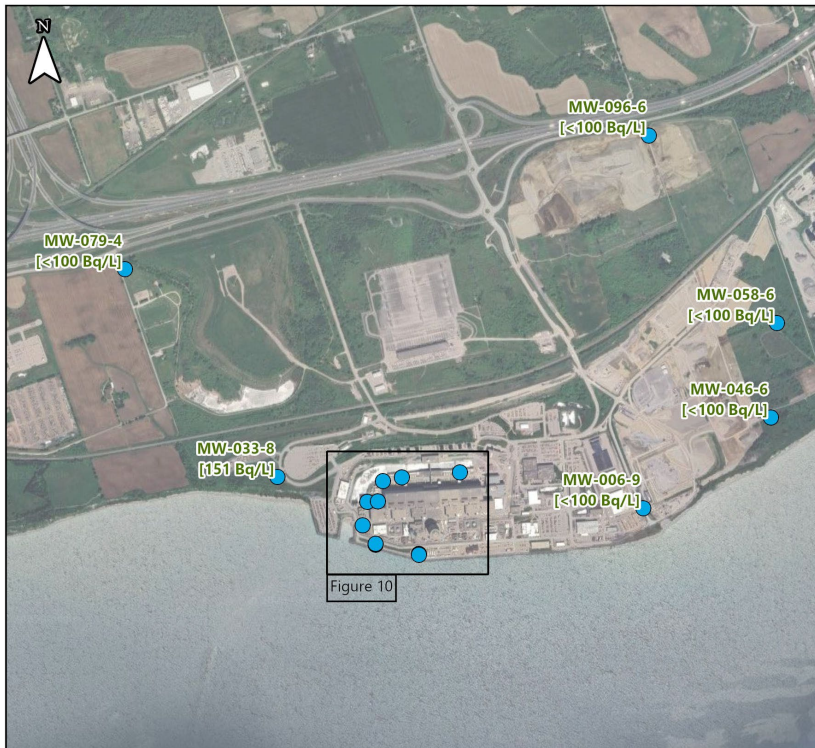
# DN | Groundwater Quality

Reactor Building Area





# DN | Site Boundary Groundwater Quality



# 2024 Summary

- For both Pickering Nuclear and Darlington Nuclear, the groundwater flow patterns remain consistent with original interpretations.
- Groundwater data collected from the key areas remained stable, which indicate consistent environmental performance.
- There were no indications of off-site impacts from PN and DN groundwater

**Groundwater reports and GIS Maps are available at [opg.com](https://www.opg.com).**

**ONTARIO** **POWER**  
GENERATION

Questions ??