

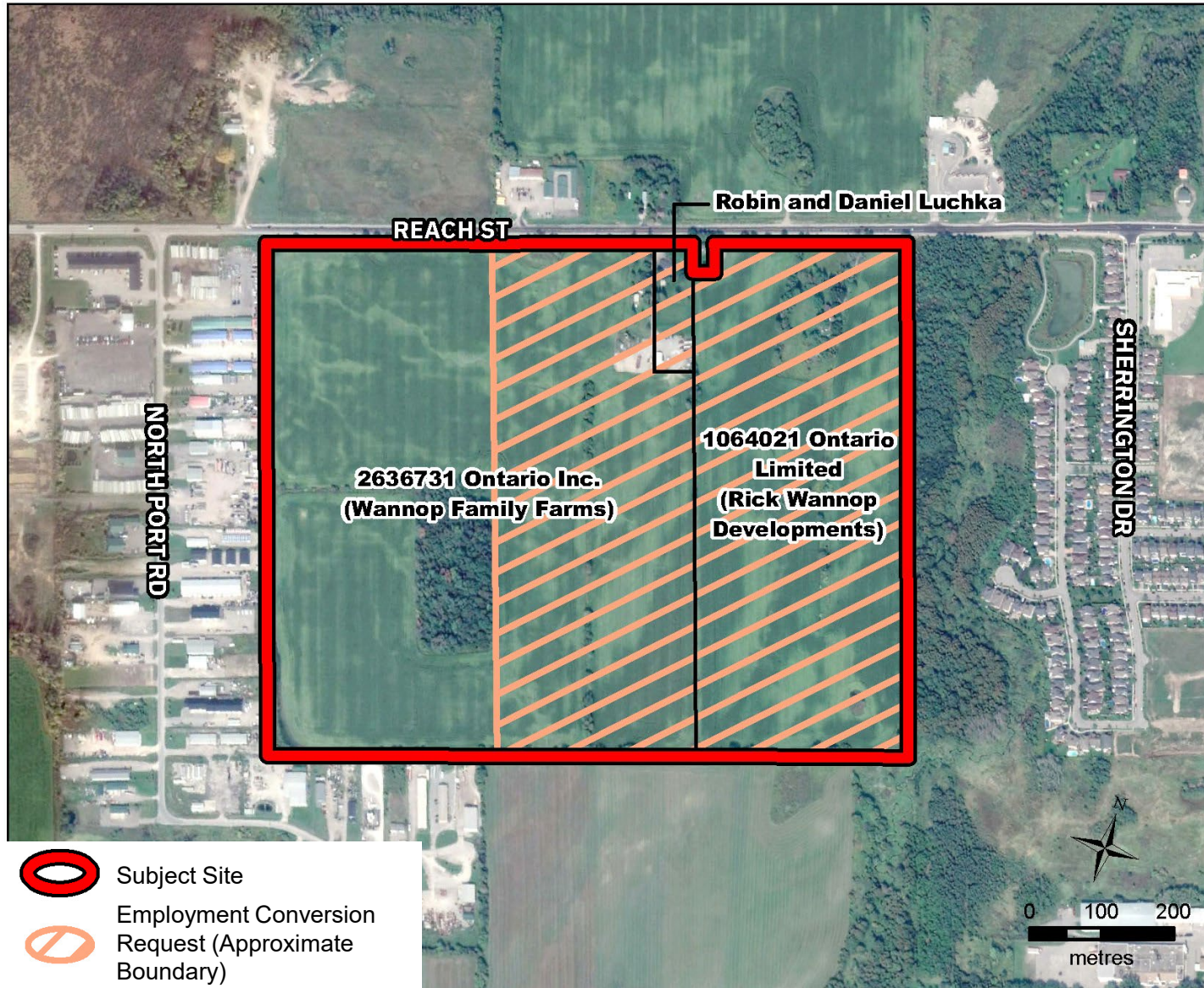
1520, 1540 and 1580 Reach Street

Employment Conversion Request for Reconsideration

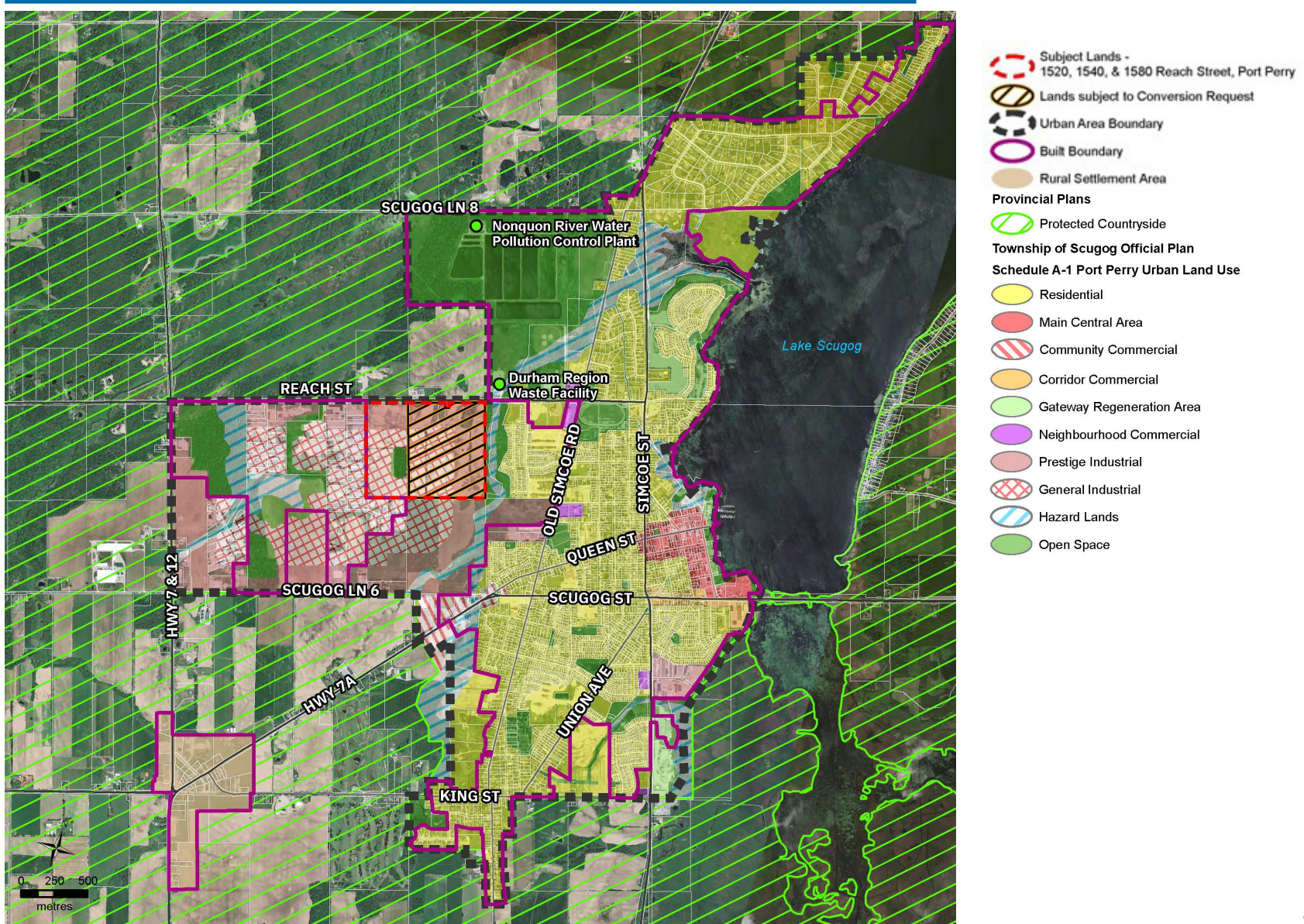
Planning & Economic Development Committee: March 7, 2023

Presented by Don Given, Malone Given Parsons Ltd.

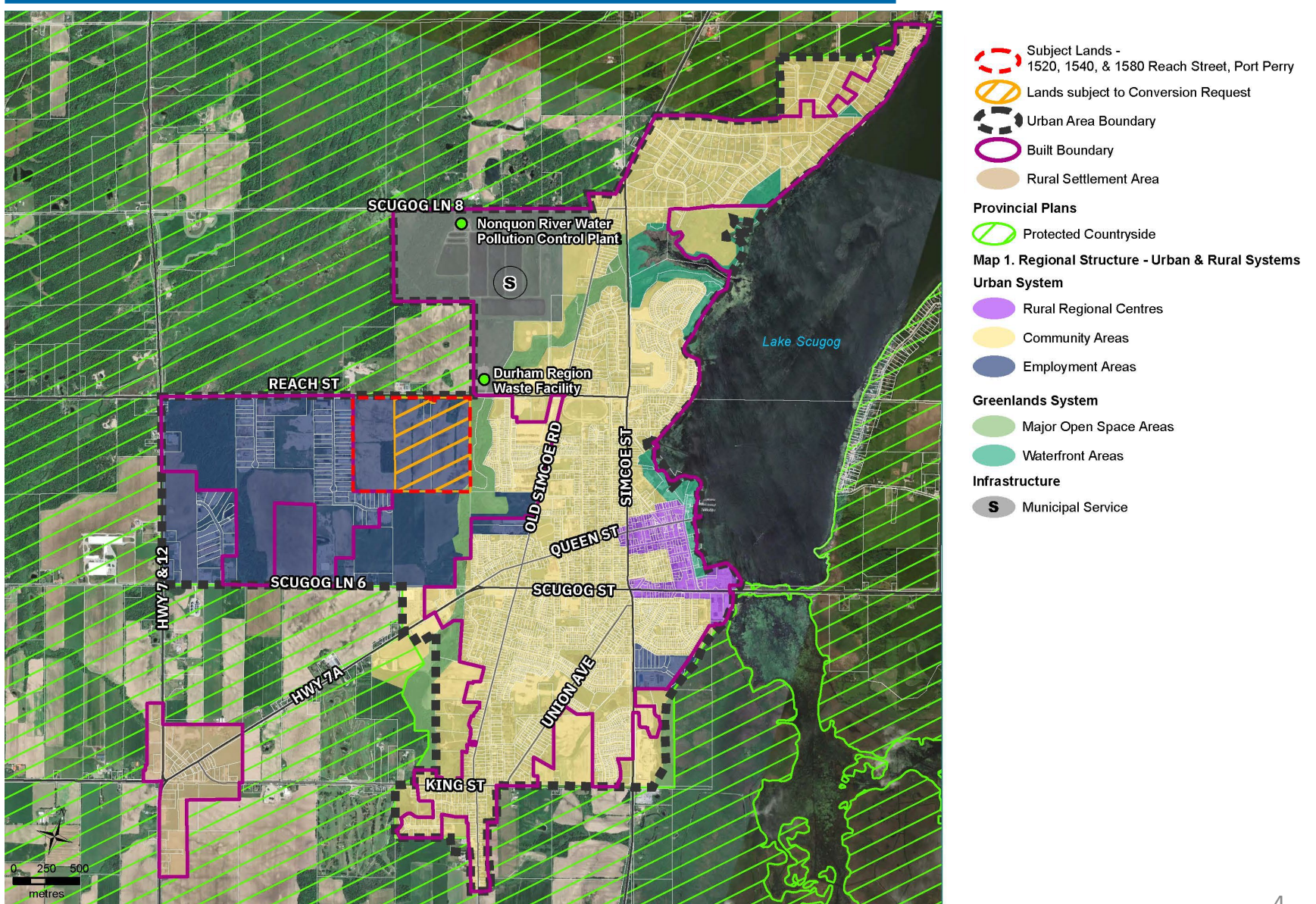
Employment Conversion Request



Land Use Designations – Township of Scugog OP



Land Use Designations – Draft Region of Durham OP



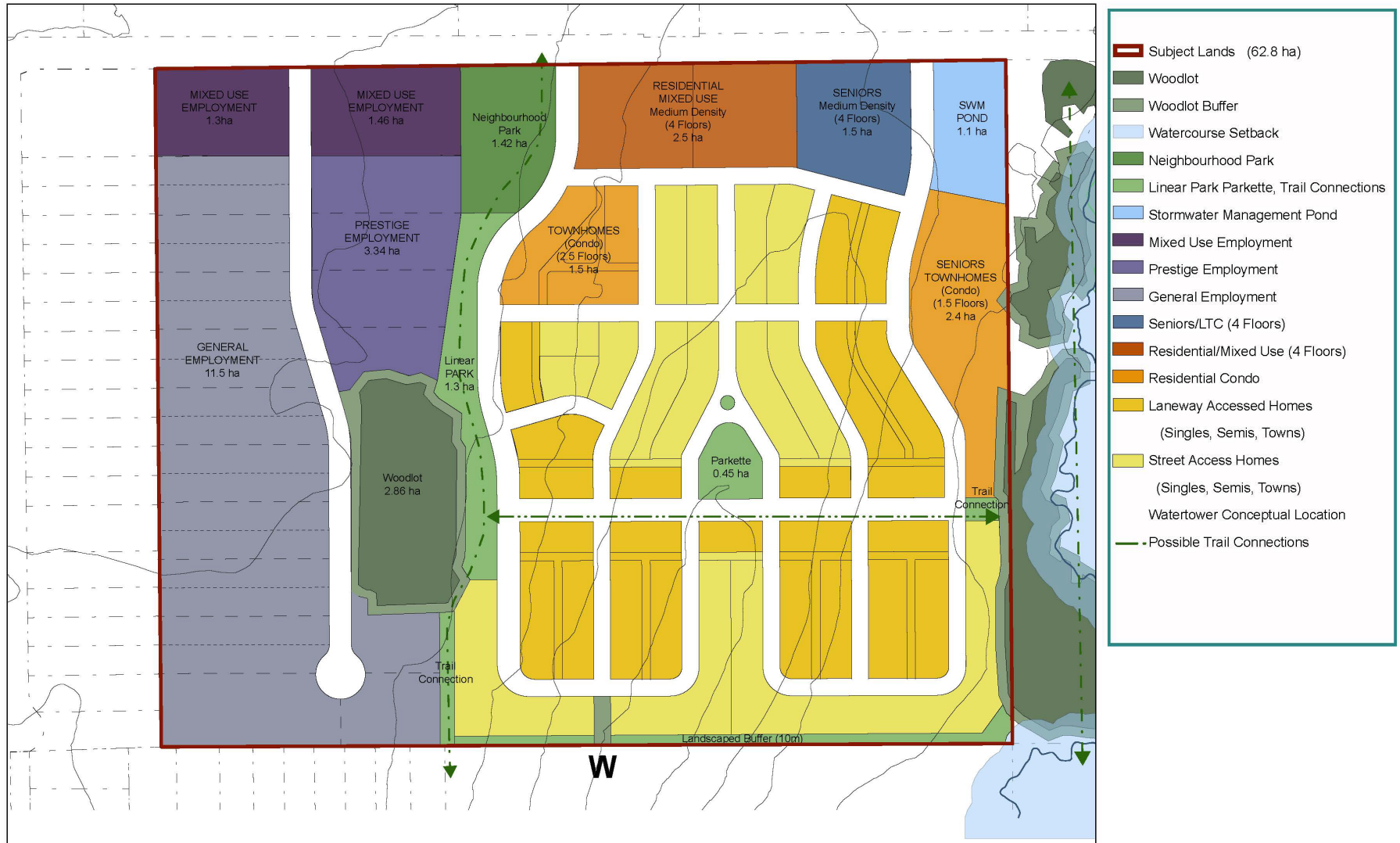
Excerpt from Section 5.5 – Employment Areas

Land Use Compatibility & Sensitive Land Uses within Employment Areas

5.5.25 Prohibit residential uses, nursing and retirement homes, elementary and secondary schools from locating within Employment Areas.

This policy does not limit or prevent area municipal official plans and zoning by-laws from prohibiting additional sensitive land uses from locating within Employment Areas, as deemed appropriate for the local context.

Design Concept



- Subject Lands (62.8 ha)
- Woodlot
- Woodlot Buffer
- Watercourse Setback
- Neighbourhood Park
- Linear Park Parkette, Trail Connections
- Stormwater Management Pond
- Mixed Use Employment
- Prestige Employment
- General Employment
- Seniors/LTC (4 Floors)
- Residential/Mixed Use (4 Floors)
- Residential Condo
- Laneway Accessed Homes (Singles, Semis, Towns)
- Street Access Homes (Singles, Semis, Towns)
- Watertower Conceptual Location
- Possible Trail Connections